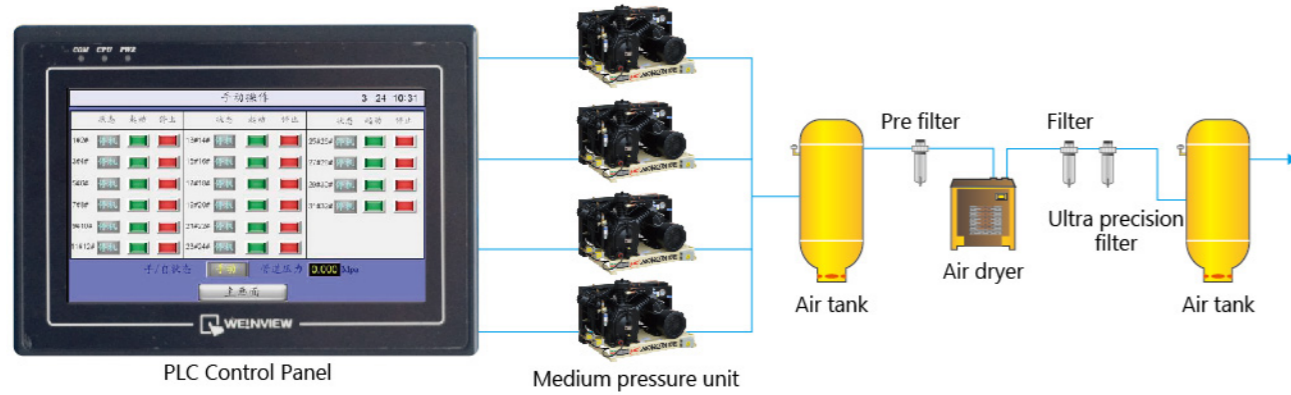


PLC INTELLIGENT CONTROL SYSTEM



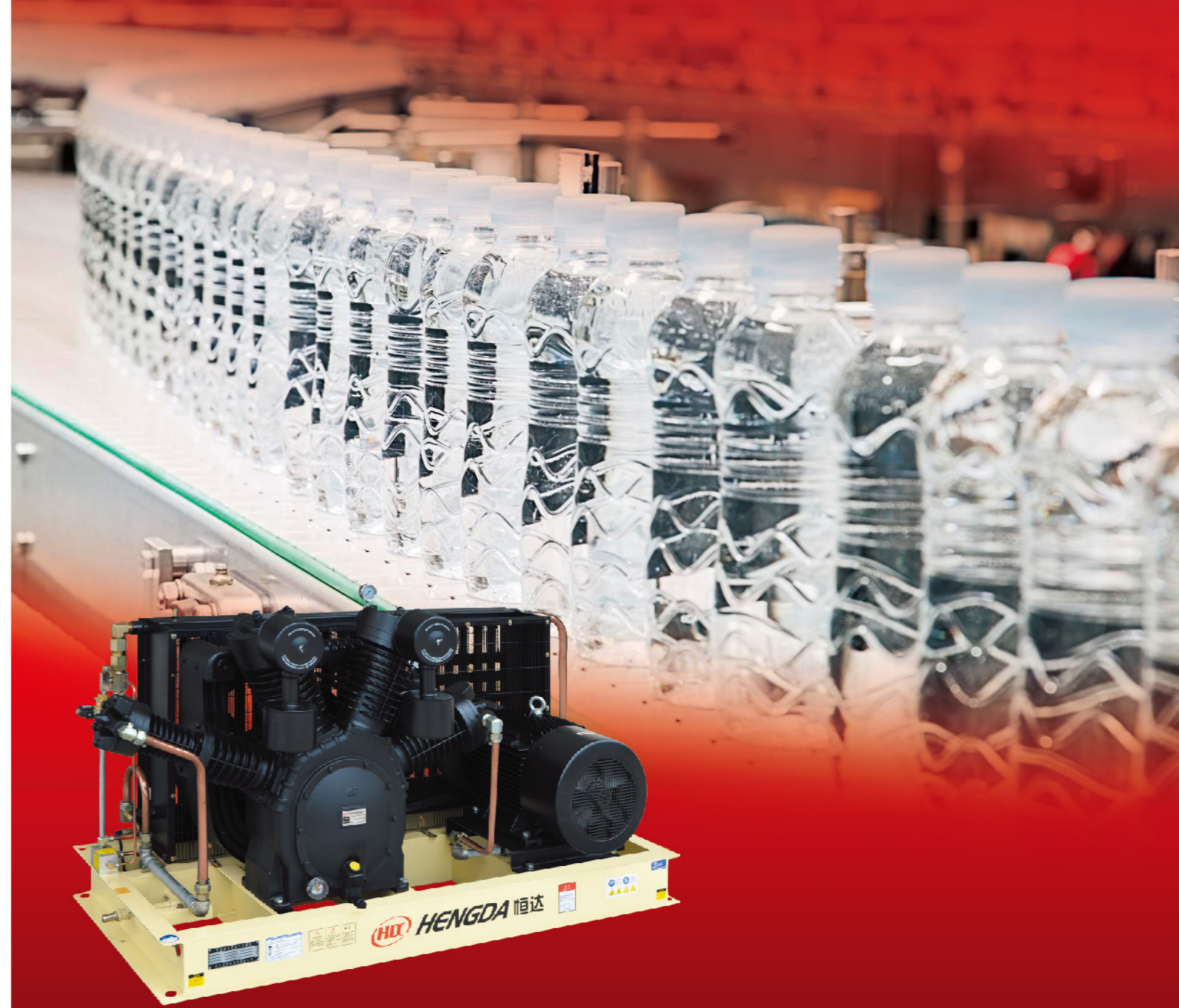
FEATURES:

- **HEAVY DUTY ROLLER BEARING**
Oversize crankshaft roller bearings handling high compression load and precision balanced overhung crankshaft for smooth continuous operation.
- **PRECISION CAST IRON CYLINDERS**
Separately cast cylinders with radial fins remove heat efficiently are precision honed for compatibility with piston rings.
- **SOLID PIECE CONNECTING RODS**
Solid end precision connecting rod without bolts and nuts come loose.
- **HIGH FLOW VALVES ASSEMBLY**
Improved heat treated stainless steel valves assembly increase flow area for durable, reliable operation and easy removal service.
- **HEAVY DUTY DISCHARGE CHECKVALVES**
Patient 'Spring-Cushion' design high pressure gas check valves for quiet and lasting operation.
- **EFFICIENT MOTOR**
Totally enclosed fan cool (TEFC) squirrel cage induction Class F insulation, IEC frame electric motor.
- **SAFETY VALVES PROTECTION**
Inter-stage and discharge safety valves protected system overpressures.
- **INTER AND AFTERCOOLER**
High efficient and maintenance free finned tube air cooled after-cooler lower compressed air discharge temperature.
- **EASY ACCESS CAST IRON CRANKCASE**
Front access heavy duty cast iron crankcase for easy inspection and maintenance allow total oil slag removal.

Distributor:

Dealer:

**PET BLOWING BOTTLE SERIES
AIR COMPRESSOR**

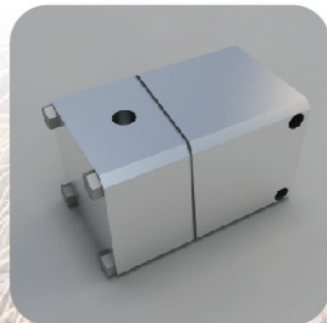
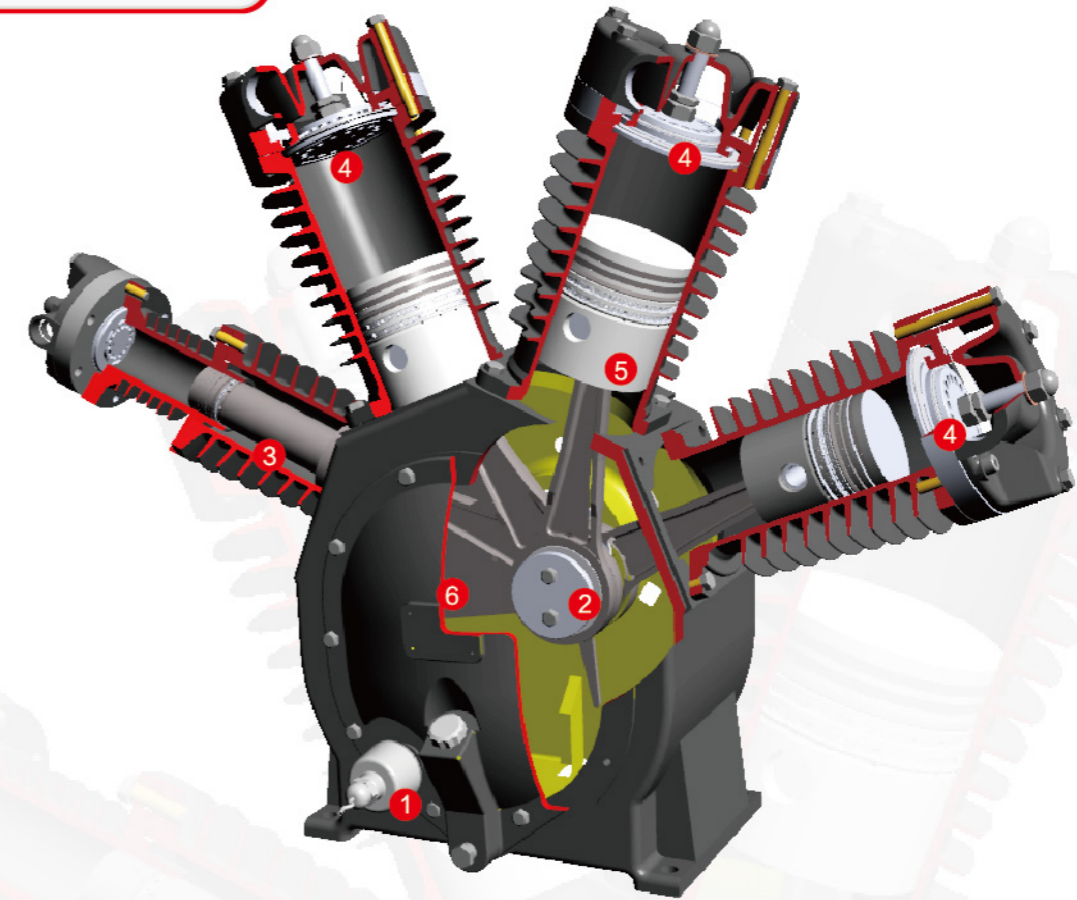


HENGDA range of high pressure air cooled reciprocating air compressors are proven in Power Generation, Oil & Gas, Carbon Fibre industries, emergency diesel engine starting, compressed air filling station, burst testing, hydraulic pressurizes chamber and fast growing population in PET blow moulding for food and beverage, pharmaceutical, and others modern industries applications.

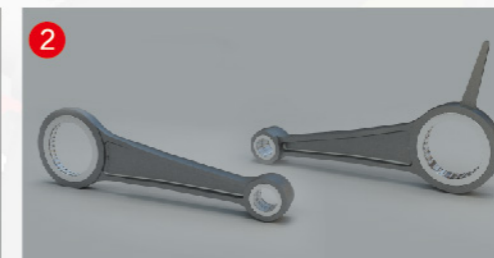


Air compressors design are air cooled, multi-stage, base plate mounted units are available from 2.2Kw to 30Kw with discharge pressure up to 400 bar.

FEATURES



1 Low oil level switch



2 Connecting rod



3 Piston



4 Valve assembly



5 Piston ring



6 Bearing

HENGDA SERIES INDUSTRIAL AIR COMPRESSOR



1630 W-1.6/10



3030A W-2.5/10



0420 V-0.5/10



0820 V-0.8/10

Type	Model		Free air delivery m ³ /min	Pressure Mpa	Motor power KW	Speed r.p.m	Air tank L	Size (L x W x H)mm	Weight kg
	Unit model	Bare model							
V type	V-0.2/17.5	0320	0.2	1.75	2.2	800	150	1360 x 525 x 980	220
	V-0.27/8.6	0320	0.27	0.86	2.2	1130	150	1360 x 525 x 980	223
	V-0.3/10	0320	0.3	1.0	3.0	1250	150	1360 x 525 x 980	240
	V-0.4/17.5	0420	0.4	1.75	4.0	830	150	1360 x 525 x 1030	242
	V-0.5/10	0420	0.5	1.0	4.0	1040	150	1360 x 525 x 1030	245
	V-0.56/12	0420	0.56	1.2	5.5	1250	150	1360 x 525 x 1030	260
	V-0.7/12	1020	0.7	1.2	5.5	750	160	1500 x 600 x 1070	295
	V-0.5/17.5	1020	0.5	1.75	5.5	600	160	1500 x 600 x 1070	295
	V-1.0/10	1020	1.0	1.0	7.5	1020	160	1500 x 600 x 1070	315
	V-0.6/10	0820	0.6	1.0	5.5	710	160	1590 x 680 x 1250	360
	V-0.8/10	0820	0.8	1.0	7.5	910	160	1590 x 680 x 1250	380
	V-1.5/7	1420A	1.5	0.7	11	1050	320	1750 x 700 x 1310	530
	V-1.3/10	1420A	1.3	1.0	11	1050	320	1750 x 700 x 1310	530
	V-1.2/18	1420A	1.2	1.8	11	900	320	1750 x 700 x 1310	620
	W type	W-1.2/10	1630	1.2	1.0	11	700	300	1770 x 780 x 1400
W-1.6/10		1630	1.6	1.0	15	950	300	1770 x 780 x 1400	620
W-2.0/7		1630	2.0	0.7	15	1000	300	1770 x 780 x 1400	620
W-2.0/10		1630	2.0	1.0	15	1050	300	1770 x 780 x 1400	620
W-1.8/12.5		1830	1.8	1.25	15	950	445	1850 x 820 x 1560	700
W-1.5/17.5		1830	1.5	1.75	15	850	445	1850 x 820 x 1560	700
W-2.5/10		3030A	2.5	1.0	22	940	445	1850 x 820 x 1560	760
W-3.0/7		3030A	3.0	0.7	22	1050	445	1850 x 820 x 1560	765
W-3.0/10		3030A	2.8	1.0	22	1100	445	1850 x 820 x 1560	775
W-2.2/14		3030A	2.2	1.4	22	940	445	1850 x 820 x 1560	760
W-2.6/14		3030A	2.6	1.4	25	1020	445	1850 x 820 x 1560	770
2-W-4.0/10		2-1630	4.0	1.0	2 x 15	1050	445	2050 x 1530 x 1500	1060
2-W-6.0/10	2-3030A	6.0	1.0	2 x 22	1100	445	2150 x 1400 x 1550	1440	

OIL FREE LOW PRESSURE COMPRESSOR

Model	Free air delivery m³/min	Pressure Mpa	Motor power KW	Speed r.p.m	Size (L × W × H)mm	Weight kg
ZW-0.11/7	0.11	0.7	1.1	560	1080 × 435 × 1025	145
ZW-0.15/7	0.15	0.7	1.5	750	1080 × 435 × 1025	150
VW-0.3/7	0.30	0.7	3	750	1340 × 550 × 1050	250
VW-0.5/9	0.50	0.9	4	570	1700 × 700 × 1400	410
VW-0.65/9	0.65	0.9	5.5	790	1700 × 700 × 1400	420
VW-0.8/9	0.80	0.9	7.5	910	1700 × 700 × 1400	430
WW-1.05/9	1.05	0.9	9.0	630	1800 × 860 × 1660	605
WW-1.25/9	1.25	0.9	11	700	1800 × 860 × 1660	625
WW-1.45/9	1.45	0.9	15	820	1800 × 860 × 1660	635
WW-1.65/9	1.65	0.9	15	960	1800 × 860 × 1660	635
2-VW-1.00/9	1.00	0.9	2 × 4	570	2000 × 1500 × 1530	840
2-VW-1.30/9	1.30	0.9	2 × 5.5	790	2000 × 1500 × 1530	850
2-VW-1.60/9	1.60	0.9	2 × 7.5	910	2000 × 1500 × 1530	860
2-WW-2.0/9	2.00	0.9	2 × 9	630	2050 × 1760 × 1700	1140
2-WW-2.5/9	2.50	0.9	2 × 11	700	2050 × 1760 × 1700	1155
2-WW-2.9/9	2.90	0.9	2 × 15	820	2050 × 1760 × 1700	1225
2-WW-3.3/9	3.30	0.9	2 × 15	960	2050 × 1760 × 1700	1225
4-WW-6.4/9	6.40	0.9	2 × 15	960	3200 × 2000 × 2600	2200



VW-0.8/9



WW-1.65/9



2-WW-3.3/9

TWO STAGE COMPRESSOR

Model	Bare model	Free air delivery m³/min	Pressure Mpa	Motor power KW	Speed r.p.m	Size (L × W × H)mm	Weight kg
35VH-0.7/30A-SB	H0621A	0.7	3.0	7.5	680	1360 × 630 × 780	310
35VH-0.7/30A (Vertical tank)	H0621A	0.7	3.0	7.5	680	1830 × 625 × 970	410
36WH-1.0/30C-SB	H1231C	1.0	3.0	11	620	1475 × 730 × 910	430
36WH-1.2/30C-SB	H1231C	1.2	3.0	15	760	1475 × 730 × 910	450
36WH-1.0/30C (Vertical tank)	H1231C	1.0	3.0	11	620	1920 × 795 × 1135	530
36WH-1.2/30C (Vertical tank)	H1231C	1.2	3.0	15	760	1920 × 795 × 1135	550
2-36WH-2.0/30C	H1231C	2.0	3.0	2 × 11	620	1930 × 1610 × 1100	1050
2-36WH-2.4/30C	H1231C	2.4	3.0	2 × 15	760	1930 × 1610 × 1100	1090
33WH-1.6/30A (Horizontal)	H1531A	1.6	3.0	18.5	790	1490 × 760 × 910	520
33WH-1.6/30B (Vertical)	H1531B	1.6	3.0	18.5	790	1140 × 735 × 1450	560
2-33WH-3.2/30B	H1531B	3.2	3.0	2 × 18.5	790	1880 × 1180 × 1450	1200
24WH-2.0/30A	H1631A	2.0	3.0	22	735	1150 × 860 × 1600	615
2-24WH-4.0/30A	H1631A	4.0	3.0	2 × 22	735	3300 × 980 × 1750	1300
3-24WH-6.0/30A	H1631A	6.0	3.0	3 × 22	735	4600 × 980 × 1750	1900

H0621A



H1631A



H1231C

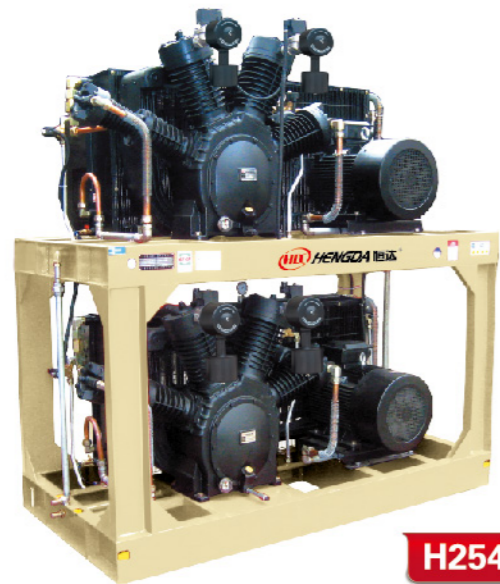


THREE STAGE COMPRESSOR

Model	Bare model	Free air delivery m³/min	Pressure Mpa	Motor power KW	Speed r.p.m	Size (L x W x H)mm	Weight kg
34WH-1.0/40	H1031	1.0	4.0	15	790	1420 x 840 x 840	470
4-34WH-4.0/40	H1031	4.0	4.0	4 x 15	790	2020 x 1570 x 2000	2100
6-34WH-6.0/40	H1031	6.0	4.0	6 x 15	790	3495 x 1565 x 2000	3050
52SH-2.0/40	H2041	2.0	4.0	22	695	1800 x 850 x 1110	660
2-52SH-4.0/40	H2041	4.0	4.0	2 x 22	695	3650 x 850 x 1110	1800
49SH-3.0/40	H2541	3.0	4.0	30	690	2020 x 935 x 1100	920
2-49SH-6.0/40 (Vertical)	H2541	6.0	4.0	2 x 30	690	2200 x 1120 x 2250	1905
2-49SH-6.0/40 (Horizontal)	H2541	6.0	4.0	2 x 30	690	4300 x 990 x 1130	1980



H2041



H2541



H1031

NON OIL COMPRESSORS

Model	Free air delivery m³/min	Pressure Mpa	Motor power KW	Speed r.p.m	Size (L x W x H)mm	Weight kg
22WWH-1.0/30	1.0	3.0	11	610	1660 x 830 x 1120	500
22WWH-1.2/30	1.2	3.0	15	812	1660 x 830 x 1120	535
22WWH-1.1/40	1.1	4.0	15	760	1660 x 830 x 1120	520
2-22WWH-2.0/30	2.0	3.0	2 x 11	610	2075 x 1110 x 1570	1130
2-22WWH-2.4/30	2.4	3.0	2 x 15	812	2075 x 1110 x 1570	1200
2-22WWH-2.2/40	2.2	4.0	2 x 15	760	2075 x 1110 x 1570	1160

22WWH-1.2/30

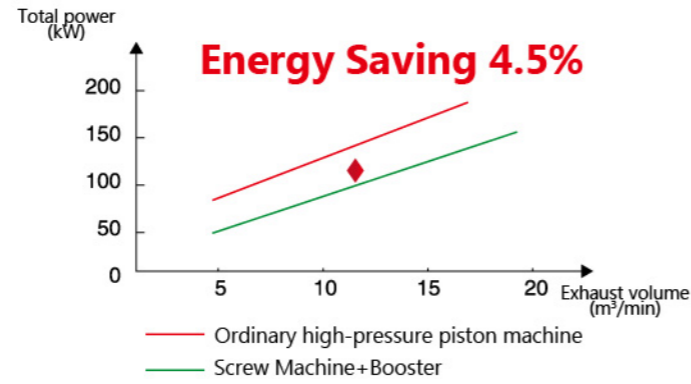


2-22WWH-2.2/40



BOOSTER AIR COMPRESSOR

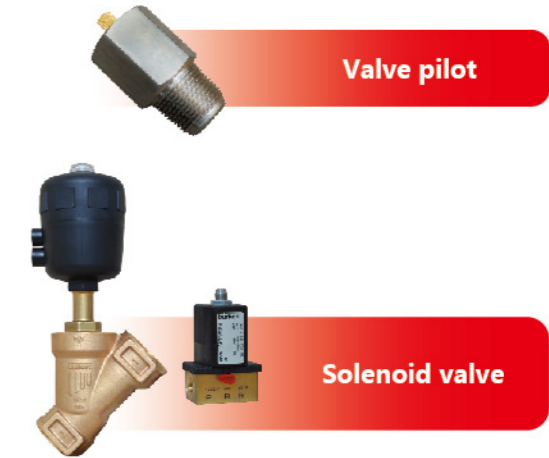
BC1621



BC2241

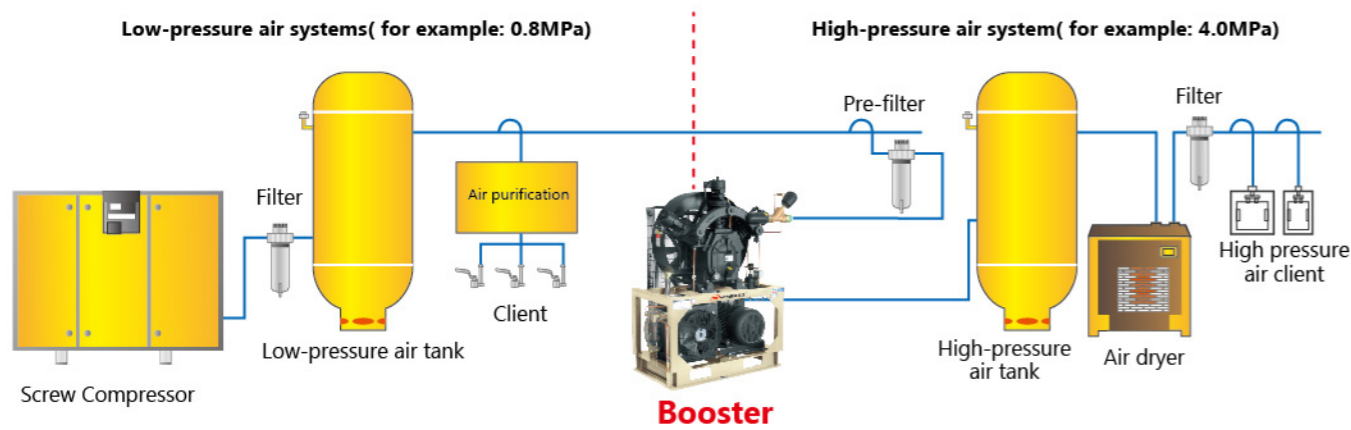


BC2031



☆ **SIMPLE** ☆ **CONVENIENT** ☆ **ECONOMY**

Booster Installation Flow Chart



Model	Bare model	Inlet pressure Mpa	Outlet pressure Mpa	Inlet capacity (low pressure) m³/min	Outlet capacity (high pressure) m³/min	Motor power KW	Speed r.p.m	Size (L x W x H)mm	Weight kg
BC108	BC1221	0.7	3.5	0.85	0.72	5.5	670	935×900×1325	330
BC180	BC1621	0.7	3.0	1.4	1.2	5.5	670	935×900×1325	350
BC180	BC1621	1.0	3.0	2	1.65	7.5	670	935×900×1325	350
BC260	BC1621	0.5	2.0	1.5	1.3	5.5	950	935×900×1325	360
BC260	BC1621	0.7	3.0	2	1.7	7.5	950	935×900×1325	370
BC260	BC1621	1.0	3.5	2.8	2.4	9	950	935×900×1325	380
BC260	BC1621	1.3	4.0	3.5	3.1	9	950	935×900×1325	380
BC330	BC2021	0.5	2.0	1.9	1.6	5	800	935×900×1325	390
BC330	BC2021	0.7	3.0	2.6	2.1	9	800	935×900×1325	400
BC330	BC2021	1.0	3.5	3.6	3.1	11	800	935×900×1325	430
BC330	BC2021	1.3	4.0	4.5	4.0	15	800	935×900×1325	450
BC430	BC1631	0.5	2.0	2.5	2.1	11	1050	1330×735×1600	390
BC430	BC1631	0.7	3.0	3.4	2.8	11	1050	1330×735×1600	440
BC430	BC1631	1.0	3.5	4.6	4.0	15	1050	1330×735×1600	460
BC430	BC1631	1.3	4.0	5.9	5.2	15	1050	1330×735×1600	460
BC560	BC2031	0.5	2.0	3.3	2.8	11	900	1330×735×1600	450
BC560	BC2031	0.7	3.0	4.4	3.6	15	900	1330×735×1600	470
BC560	BC2031	1.0	3.5	6	5.2	18.5	900	1330×735×1600	500
BC560	BC2031	1.3	4.0	7.6	6.7	22	900	1330×735×1600	510
BC650	BC2031	0.5	2.0	3.8	3.2	15	1050	1330×735×1600	470
BC650	BC2031	0.7	3.0	5.1	4.2	18.5	1050	1330×735×1600	500
BC650	BC2031	1.0	3.5	7	6.0	22	1050	1330×735×1600	510
BC650	BC2031	1.3	4.0	8.9	7.8	22	1050	1330×735×1600	510
BC-5.6/35-10	BC2041	1.0	3.5	6.5	5.6	18.5	585	2070×1000×1115	835
BC-7.1/40-13	BC2041	1.3	4.0	8.3	7.1	22	585	2070×1000×1115	840
BC-6.0/35-10	BC2041	1.0	3.5	7	6	22	630	2070×1000×1115	845
BC-7.7/40-13	BC2041	1.3	4.0	8.9	7.7	22	630	2070×1000×1115	845
BC-6.7/35-10	BC2041	1.0	3.5	7.8	6.7	22	700	2070×1000×1115	845
BC-8.5/40-13	BC2041	1.3	4.0	9.9	8.5	25	700	2070×1000×1115	850
BC-7.0/30-7	BC2041	0.7	3.0	8.3	7	30	735	2130×1000×1235	900
BC-8.2/35-10	BC2041	1.0	3.5	9.6	8.2	30	630	2130×1000×1235	905
BC-10.4/40-13	BC2241	1.3	4.0	12.2	10.4	30	630	2130×1000×1235	905