



# Profile

FAMSUN Holdings Co., Ltd. is an integrated solution provider of plants, equipment and services, headquartered in Yangzhou, China. After 50 years' development, FAMSUN has grown into a global technology partner for plant, equipment and services in feed manufacturing, grain milling, grain handling and storage, oilseed processing, animal farming, food processing, steel structure construction and industrial automation.

FAMSUN has over 3,000 employees, including 900 technicians and engineers. Backed by its strong R&D, FAMSUN has developed more than 100 series (800 models) of quality feed and grain processing machines and is capable of delivering all types of turnkey feed mill projects from normal animal feed production lines to high-end extruded aquafeed production lines.

FAMSUN operates 6 production sites as well as over 50 agencies, sales and service stations, and spare parts warehouses all around the world. FAMSUN has successfully completed more than 6600 referenced projects in 130 countries.

Our vision is to become the global leader in machine manufacturing, plant engineering and technical services. We value innovation, hard work, dedication, integrity, quick response and team work.



**6600+** referenced projects in **130** countries

**50+** agencies, sales & service stations and spare parts warehouses worldwide closed to customers

**6** production bases, one in Egypt and six in China, total **74.07** hectares of manufacturing and distribution capacity

**3000+** employees work in sales, customer service, engineering, R&D, production and logistics

**1000+** patents until now

Equipment is marked by **CE** and **ATEX** symbol

## FAMSUN

FAMSUN dreams to build a green and healthy supply chain **from farm to table** together with our customers.

To realize this dream, we will reach beyond the boundary to become an **integrated solution provider**.

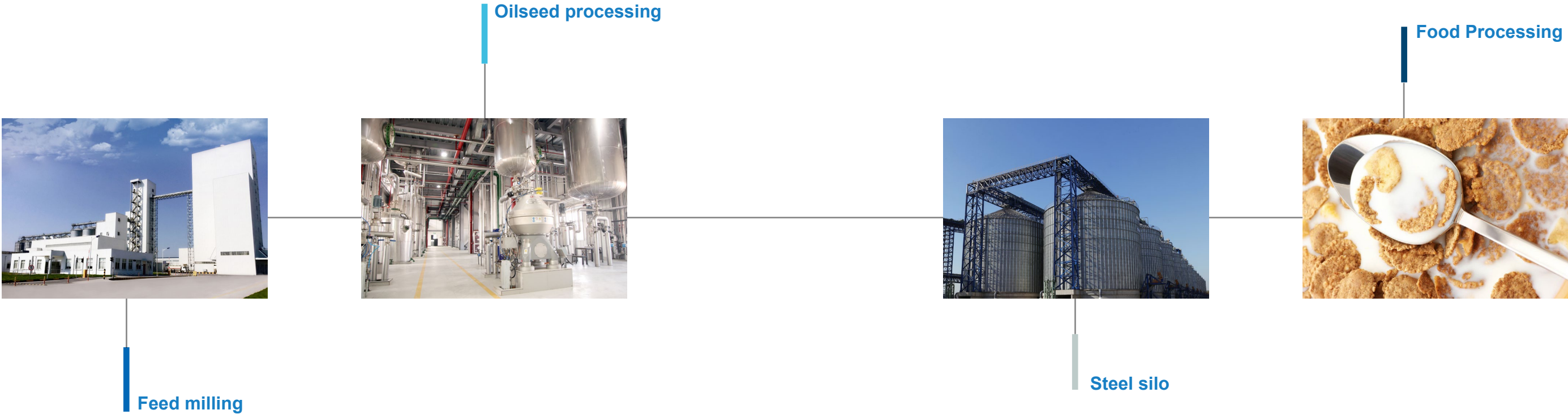
FAMSUN is our new brand.

It originates from **farm, family and sun**,

FAMSUN implies integrated solutions for a green and healthy farm-to-table supply chain, and fits into our globalization strategy.



# Our Business



“  
We are an essential link in the farm-to-table industry chain.  
We provide integrated technical solutions and services.  
We help feed the future.”

FAMSUN is an integrated solution provider of plants, equipment and services in the farm-to-table industry chain. Our global ability and experience in turnkey project delivery in feed milling, grain logistics and processing, steel structure building as well as industrial automation has helped our customers succeed in their respective markets.

As world’s demand for quality and safe foods grows, food supply chains have become more connected. Most of our customers diversify their businesses and extend to upstream and downstream links in order to boost efficiency, safety and resource sustainability. To meet with customer’s expectations of becoming a single-source supplier,

which shares knowledge, experience and resource, provides convenient, flexible and consistent technical supports to customers and help them grow businesses, we develop our business mainly along the chains where our customers doing business:

- Feed Technology:** processing machines and plants for animal feed, aquatic feed, dry petfood and premix;
- Farm Technology:** animal houses, feeding systems, farm environmental systems;
- Grain Technology:** the storage, drying and conveying of grains, rice milling, oilseed processing as well as the manufacture of breakfast cereals and extruded snacks;
- Others:** steel structure building, plant automation, robotic machines, spare parts, etc.

# Customer-oriented R&D

To bring about a technology based company

The success of FAMSUN as a leading solution provider in feed industry resides in its great research and development efforts. Over 1,000 patents stand testament to FAMSUN R&D innovation power. Since Innovation is the cornerstone of success, in order to maintain its innovation edge in the turbulently changing and intensely competitive market, the company invests an average of more than five percent of all sales annually in basic research and applied development.

With a stand of R&D Institutes in Asia, Europe and America, FAMSUN sophisticated specialists work around the clock in the development of existing products and solutions plus exploiting new terrain and unlock new business fields on the basis of markets analysis, customer needs evaluation and feasibility assessment. Additionally, FAMSUN maintains a close collaboration with other outstanding companies, inventive customers, renowned universities and institutes so as to constantly bring know-how together on technologies and transfer them to customer's facility.

1000+

patents were introduced until now



Fundamental test platforms in the new Test Center for feed grinding, mixing, pelleting, raw material extrusion, twin-screw extrusion and drying as well as conveying are enabling FAMSUN to optimize processing line, obtain best production performance, and achieve high quality and safe feed for customers.

Global-covered R&D institutes in Asia, Europe and America;  
More than 5% of annual revenue be invested in R&D;  
About 20% employees work in Research and Development;  
1000+ patents were introduced until now;  
State-of-the-art Test Center for customer-tailored trail test and laboratory analysis.

## Honor

- 2003- China Feed Machinery Research Base
- 2006- China Famous Brand Product
- 2009- Post-Doctoral Working Station
- 2010- Key High-Tech Enterprise of National Torch Plan
- 2010- China's TOP 500 Machinery Companies
- 2011- High & New Technology Enterprise
- 2012- China Best Enterprise in Talents
- 2013- National R&D Center for Feed Equipment and Technology
- 2014- China National Enterprise Tehchnology Center
- 2014- International Technology Committee (TC) of Feed Machinery
- 2015- The ISO/TC293 Secretariat (Feed machinery)





# Advanced Manufacturing

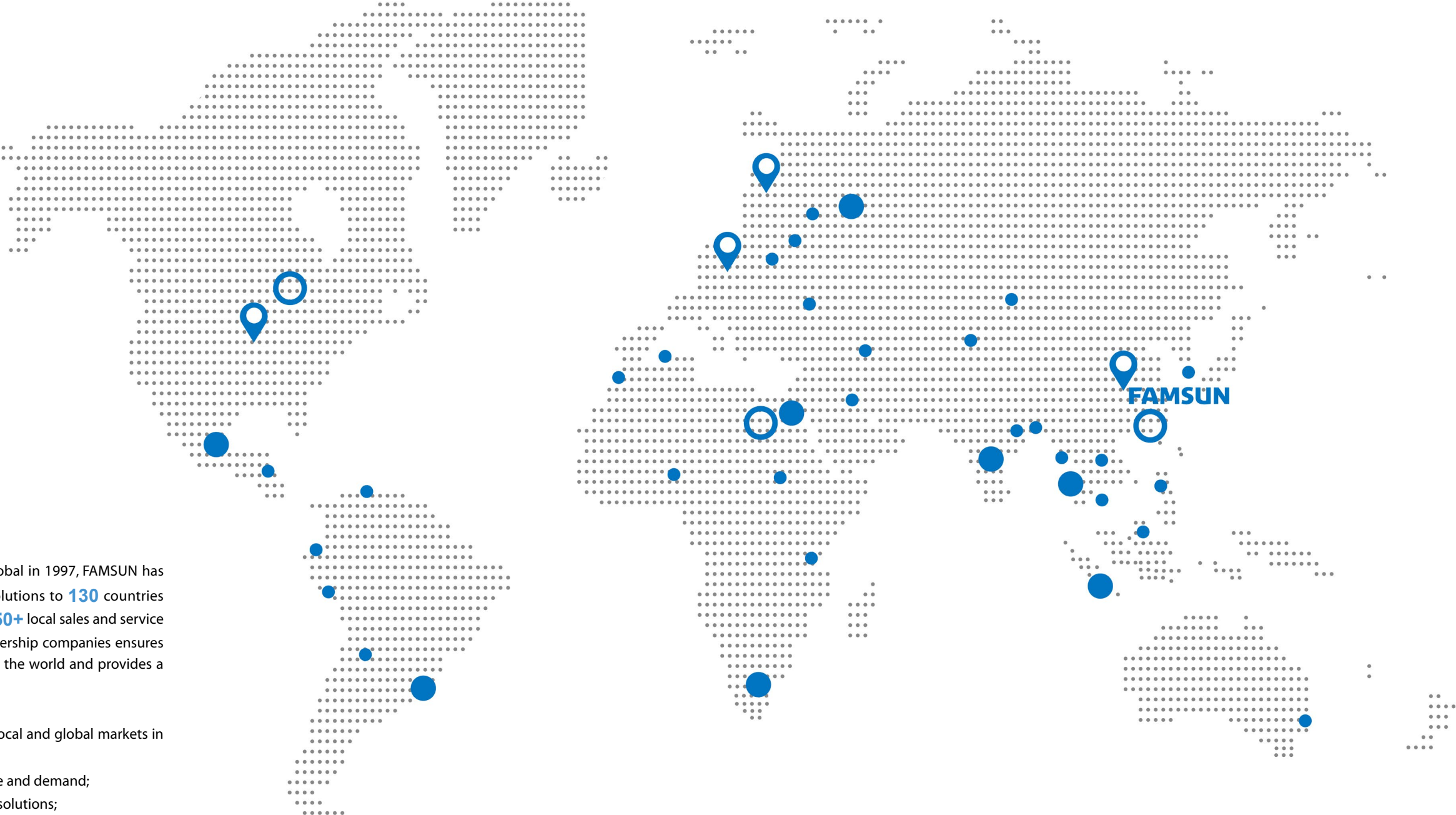
Cutting edge technologies to manufacture excellent products

By cooperating with leading manufacturing tool companies, FAMSUN introduces advanced production technologies such as CNC machining centers, welding robots, pipelining production systems, lean manufacturing management, etc. in its workshops, to produce extra precision and high quality for every piece of FAMSUN product from material processing to machining, painting and assembly.





# Global Presence



**T**hink globally, act locally.  
Since the execution of Go-Global in 1997, FAMSUN has delivered its products and solutions to **130** countries around the world. A solid network of **50+** local sales and service offices, agencies and **20+** local partnership companies ensures that our global reach extends around the world and provides a neighborhood link to our customers.

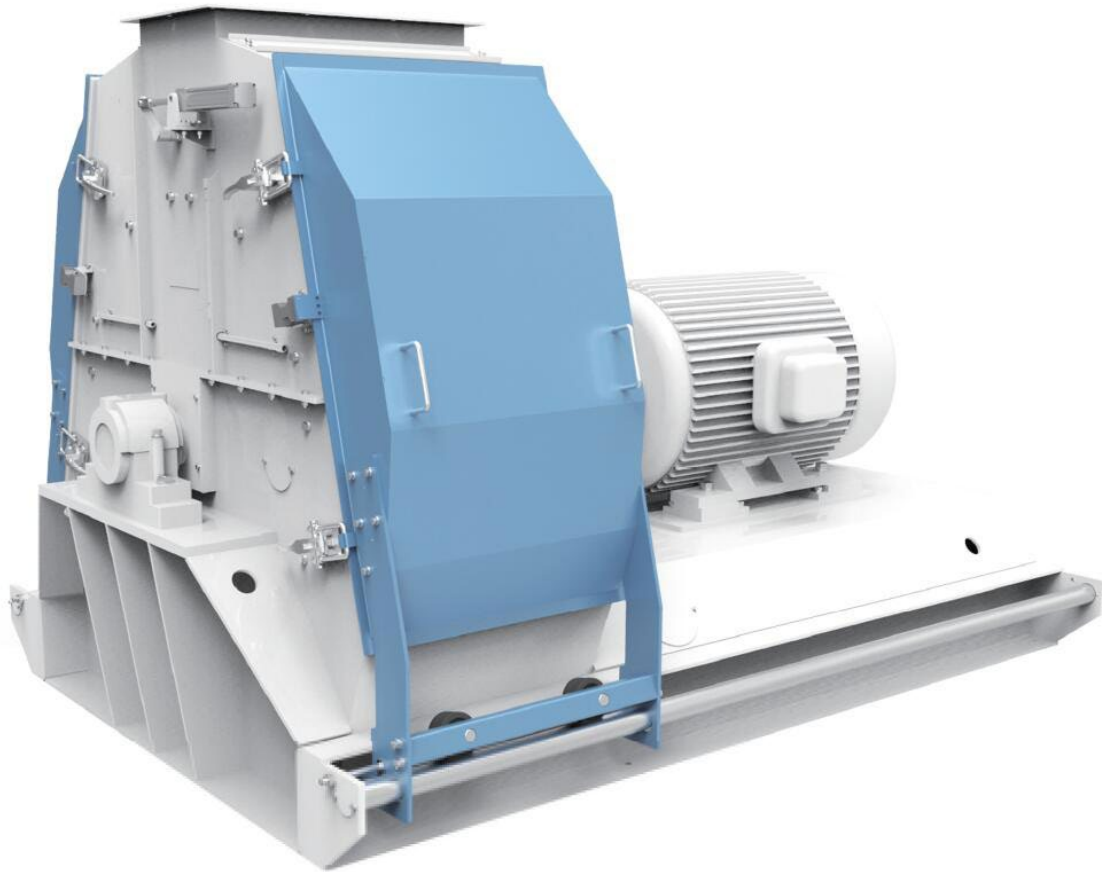
In 2018, we will continue to develop local and global markets in ways that:

- To learn and well know local culture and demand;
- To bring leading technologies and solutions;
- To improve food and nutrition security;
- To share resources what we have;
- To be a reliable partner of local industry;
- To provide training and promote Youth Employment;
- To take up social responsibility.

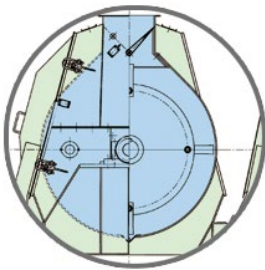
- Offices and service sites
- 📍 R&D Institute
- Production Bases



# FAMSUN Grinding Equipment



FAMSUN SFSP132 Series Hammermill



Water-drop shaped grinding chamber



One-step screen hold-down device  
Patent No. ZL98 2 42415.9



High-precision dynamic balancing test



Fully-open sliding door  
Patent No. ZL98 2 42414.0

The high efficient hammermill for regular normal- and coarse-grinding demands, particularly in feed pre-/post-grinding.

**High capacity**  
Water-drop chamber with W-shaped second time grinding structure and increased large grinding surface, capacity increases up to 25%.

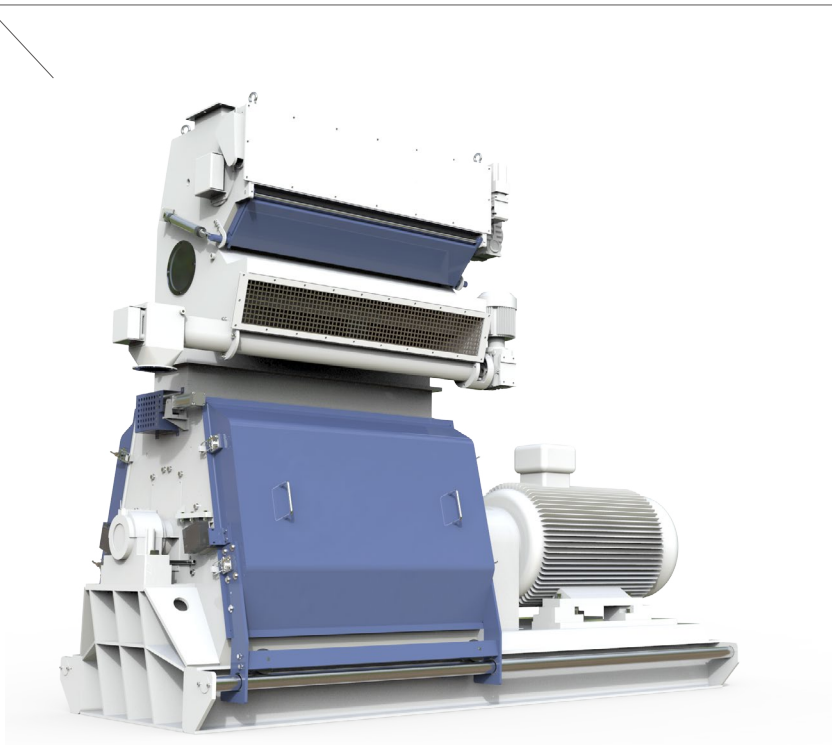
**Stable performance**  
Dynamically balanced high-precision rotor and top hard wear-resistant hammers, stable running, long service life.

**Friendly operation**  
Patented one-step screen holding-down device and fully-open sliding door, easy access and maintenance; CE certified standard design for human & machine safety.

**Customized solution**  
We can offer customized solutions for machine size, feeder, screen, aspiration system, underneath hopper etc.

Model	SFSP132×65G						SFSP132×102G			
	132		160		200		250		315	
Power (kW)										
Raw material	Wheat	Corn	Wheat	Corn	Wheat	Corn	Wheat	Corn	Wheat	Corn
Sieve diameter(mm)	Φ2.5	Φ2.0	Φ2.5	Φ2.0	Φ2.5	Φ2.0	Φ2.5	Φ2.0	Φ2.5	Φ2.0
Capacity (t/h)	10-15	14-20	14-20	18-24	16-25	23-28	21-28	27-34	25-32	32-40
Selection recommended	Livestock and poultry feed, Sieve diameter≥Φ1.5									

# FAMSUN SWFP Series Fine-Grinding Hammermill



Widened grinding surface



U-shaped step grinding structure



Fully-open sliding door

Specialized for the fine grinding of pre-crushed various brokens in feed, food and oilseed industries. Pre-broken coarse initial materials like cereal grains, oil cakes and meal in particular.

**High capacity**  
Patented axial air inlet and water drop shaped step grinding structure and tuning technology for optimal grinding; widened grinding surface (1.5 times of normal), capacity increase 25% possible.

**Stable performance**  
Rigid structure, optimal hammer arrangement and dynamically balanced high-precision rotor, stable running and low noise; reversible rotation, long service life.

**Friendly operation**  
Patented one-step screen hold-down device and fully-open sliding doors, easy access and maintenance; CE standard design for human & machine safety.

**Customized solution**  
We offer customized solutions for machine size, feeder, screen, aspiration system, underneath hopper etc.

Model SWFP	Rotor Dia.(mm)	Width (mm)	Screen area (m <sup>2</sup> )	Hammer QTY	Tip speed (m/s)	RPM	Power (kW)	Capacity (t/h)	Air volume (m <sup>3</sup> /h)	Fan power (kW)
SWFP66×125	660	1270	2.23	160/240	102	2970	160/200/220/250	12~19	13000	37
SWFP66×100	660	1108	1.95	128/192	102	2970	110/132/160	8~13.5	10000	30
SWFP66×80	660	800	1.41	96/144	102	2970	90/110	6~8	8000	22
SWFP66×60	660	600	1.06	64/96	102	2970	55/75	4~7	6000	15

Note: Grinding pre-broken corn (moisture content <14%) with 1.0 mm screen.

Highly efficient pulverizer for ultra-fine grinding of raw materials in aquafeed, pet food and feed production. Grinding more value out of your raw materials.

**High energy efficiency**  
Redesigned convex cover and aspiration system to diminish resistance, avoid over-grinding, facilitate discharge and reduce power consumption.

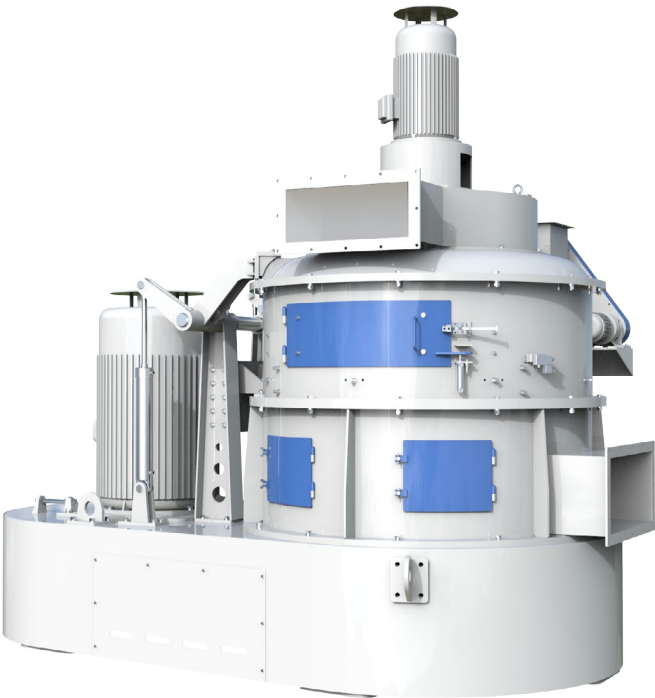
**Increased capacity**  
Thanks to the innovative guiding to grind technology, output of the pulverizer is increased by 20-40%.

**Good product quality**  
Optimal grinding chamber and aspiration transport ensures a low temperature grinding without nutrient degradation.

**Low maintenance**  
No sieve furnished, and wear parts with a longer service life, resulting in less maintenance required.

Model	SWFL170	SWFL150	SWFL130	SWFL110C
Capacity (t/h)	8-15	6-12/7-15	4.5-7.0	2.5-4
Power (kW)	220	160/200	132	110

Note: For grinding high-grade aquafeed with 95% product passing through 80-mesh screen.



# FAMSUN SWFL Series Ultra-fine Pulverizer



## FAMSUN SFSP112 Series Hammermill



High efficient hammermill for the coarse-and normal-grinding in feed mills, biofuel, distilleries, food factories, edible oilmills etc.

- High capacity**  
Water-drop shaped chamber with W-shaped second time grinding structure, optimal hammer arrangement and screen with adjustable tip system for high grinding efficiency.
- Stable performance**  
Dynamically balanced precision rotor and reinforced wear-resistant hammers, stablerunning; reversible rotor, long service life.
- Friendly operation**  
Patented screen carriage with one-step screen hold-down device and fully-open sliding door, easy access and maintenance; CE certified standard design for human & machine safety.

Model	SFSP112×40E	SFSP112×60E	SFSP112×80E	SFSP112×110E
Power (kW)	75/90/110	110/132/160	200/220/250	250/315/350
Capacity (t/h)	12-20	22-30	36-45	46-65

Note: corn.

## FAMSUN SFSP56P Series Hammermill

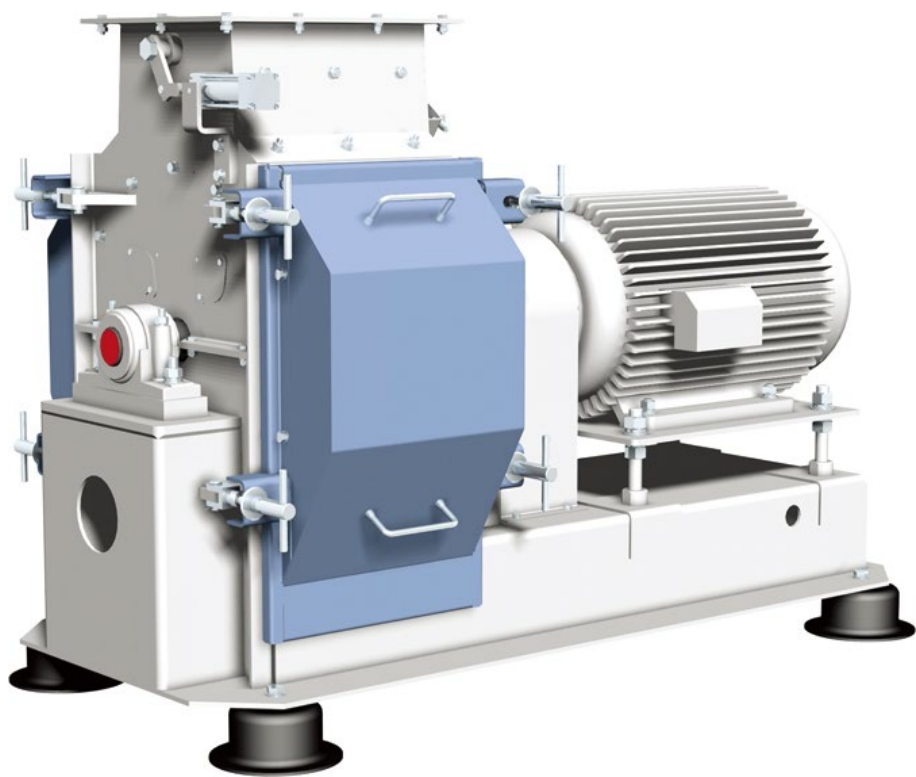


The hammermill featuring low speed, specialized for layer feed production.

- Available of low speed configuration and double speed configuration.
- Optimal hammer arrangement, increased capacity.
- Reversible rotor, prolonged service life.
- CE standard design for human & machine safety, safer and more reliable.

Model	SFSP56×60P	SFSP56×80P
Power (kW)	22	37
Capacity (t/h)	8.0 screen (crumbling)	10-16

FAMSUN SFSP56C Series Hammermill



Our classic hammer mill has proven long time and stable performance in feed mills all over the world.

Model	Power (kW)	Capacity (t/h)
SFSP 56×40C	30/37	4-6

Note: Grinding corn (moisture content ≤14%, bulk density ≥690g/l) with Ø3.0mm perforated screen.

FAMSUN TWLY Series Impeller Feeder



Classic feeder for hammermill in grain & oilseed processing plants, feed mills and food factories.

- Suitable for feeding granular and powdery materials.
- Variable frequency enabling continuous feeding rate adjustment.
- Magnets for metal removing.
- Sealing at shaft ends, long service life ensured.
- Adjustable gap between baffle and feeding roller.

Model	TWLY 20×30	TWLY 20×60	TWLY 20×80	TWLY 20×100	TWLY 20×102	TWLY 20×125	TWLY 25×30	TWLY 25×44	TWLY 25×60	TWLY 25×65	TWLY 25×80	TWLY 25×102	TWLY 25×110	TWLY 25×125
Capacity (t/h)	2.5-9	5-20	7.5-26.5	10-30	10-33	13.5-45	9-22	15-32	20-45	21-60	25-60	30-75	35-80	40-90
Power (kW)	0.75	1.1	1.1	1.5	1.5	2.2	1.1	1.5	1.5	1.5	1.5	2.2	2.2	2.2

The values of productivity are calculated based on corn with bulk density of 720kg/m³ and motor working frequency within 20-80 HZ.



# FAMSUN Mixing Equipment

## FAMSUN SJHS Series Double-Circle Paddle Mixer



**Highly efficient mixer with feed-to-food safety standard for animal feed, food and pet food industries.**

**High homogeneity**  
Patented double-circle paddle rotor, mixing homogeneity ≥95% (i.e. CV≤5%).

**Hygienic design**  
Optimized paddle-to-wall gap and fully open discharge doors, minimum residue, no contamination; unique air-sac seal, no leakage; optional corrosion-resistant steel design.

**Easy maintenance**  
Large access door for cleaning and maintenance, time saver.

**High efficiency**  
High mixing homogeneity with short dry mixing (60s~90s per batch) and discharging time.

Model	Power (kW)	Capacity (kg/bat)	Volume (m³)
SJHS0.2	2.2/3	100	0.2
SJHS0.5	5.5/7.5	250	0.5
SJHS1	11/15	500	1
SJHS2	18.5/22	1000	2
SJHS3	30/37	1500	3
SJHS4	37/45	2000	4
SJHS6	2×30	3000	6

Note: Liquid addition possible, 3% maximum.



## FAMSUN SLHS Series Twin-Shaft Paddle Mixer

**Highly efficient mixer for most industrial blending applications, premix / additive / feed in particular.**

**Wide application**  
Suitable for various blending applications such as premix, additive, feed, food cement, chemical and pharmaceutical industries.

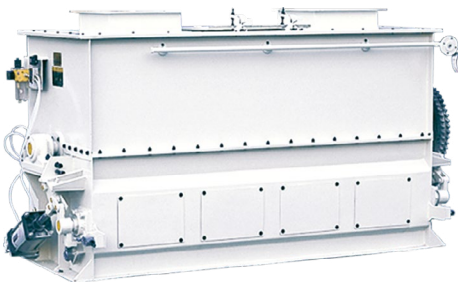
**Stable and efficient**  
Low speed and gentle mixing, stable running and no segregation; High homogeneity (CV≤3~5%) with short dry mixing (60~90s) and discharging time.

**Hygienic design**  
Fully-open bomb doors and W-shaped trough plus unique air-sac seal, momentary discharging, minimum residue, no leakage; optional stainless steel design.

**Ease maintenance**  
Large access door and optional air-clean device, ease of cleaning and maintenance.

Model	SLHS1	SLHS2	SLHS3	SLHS4	SLHS7A	SLHS8A
Power(kW)	11/15	18.5/22	22	37/45	45	45
Capacity (kg/bat)	500	1000	1500	2000	3000	4000
Volume (m³ )	1	2	3	4	7	8
Remark	The capacity is based on a material bulk density of 0.5t/m³.					

Model	SLHS4ZL	SLHS7ZL	SLHS8ZL	SLHS10ZL	SLHS12ZL	SLHS16ZL
Power(kW)	18.5×2	22×2	30×2	30×2	37×2	45×2
Capacity (kg/bat)	2000	3000	4000	5000	6000	8000
Volume (m³ )	4	7	8	10	12	16
Remark	The capacity is based on a material bulk density of 0.6t/m³.					



## FAMSUN SLHY Series Horizontal Ribbon Mixer

**Batch mixer suited for blending dry, free-flowing ingredients in feed, food, chemical and pharmaceuticals industries.**

Optimal rotor structure, even fill of the mixer and no death corner.  
Mixing homogeneity: CV≤7%, mixing period: 3~6 min.  
Capable of fat application.  
Return air chute furnished for internal and external pressure balancing.

Model	Power (kW)	Capacity(kg/bat)
SLHY2.5C	15	1000
SLHY5C	30	2000

# Liquid Adding

Modular connection, tanks, pumps and pipelines can be sold as separate products.

Separate modular connection reduces oil leakage in itself and saves installation space.

Various options, to meet majority of customer's requirements, greatly improve complex structural redundancy, and avoid bad spraying performance caused by improper installation position of the pump.



Large Oil Tank

Model	MSYG30	MSYG30(horizontal)
Capacity(m³)	30	30
Weight(kg)	6113.5	4630.8
Dimension	Diameter*Overall height	Length*width*height
(mm*mmmm*mm*mm)	2948*8053	5577*3000*4569

Note: 1. Steam heating;  
2. Use shut-off valve and reducing unit for the pipeline connecting large oil tank and pumping system.

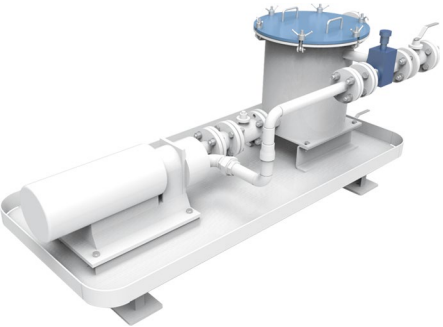
Daily Tank

Model	MSYG1	MSYG2	MSYG3	MSYG4
Optional electric heating power(kW)	2+2+2	2+2+2	2+2+2	2+2+2
Capacity(m³)	1	2	3	4
Weight(kg)	547	1020	1135	1332
Anchor bolt size(mm*mm)	1100*1274	1500*1584	1500*1584	1500*1584
Dimension(mm*mm*mm)	1500*1600*2600	2000*2000*2680	2000*2000*3180	2000*2000*3788

Note: There is optional agitator (power 1.5kw) for the tank; normally we recommend to use tuning fork level sensor for tank with agitator, and floating ball level sensor for tank without agitator.



Pumping system

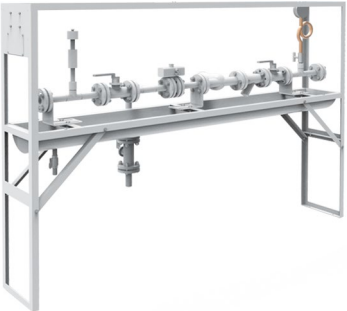


Model	MSBS40		MSBS80	
	Oil	Molasses	Oil	Molasses
Flow rate(L/min)	25	28	60	56
Outlet size(mm)	DN20	DN25	DN25	DN40
Power(kW)	2.2	3	4	5.5
Anchor bolt size (mm*mm)	400*1750	400*1750	600*1950	600*1950
Dimension(mm*mm*mm)	1000*2319*905	700*2319*905	1000*2824*1030	1000*2824*1030

Model	MSBS160	
	Oil	Molasses
Flow rate(L/min)	150	150
Outlet size(mm)	DN32	DN40
Power(kW)	7.5	11
Anchor bolt size (mm*mm)	600*1950	600*1950
Dimension(mm*mm*mm)	1000*2824*1005	1000*2824*1005

Note: Choose suitable pumping system according to the flow rate; for viscous liquid like molasses, we recommend to use molasses pumping system with gear motor.

Pipeline system



Model	MSGL15		MSGL25	
	Oil	Molasses	Oil	Molasses
Flow rate(L/min)	1-22	4-100	17-90	9-300
Port size(mm)	DN15	DN25	DN25	DN25
Brand of Flow meter	Domestic	E+H electromagnetic	Domestic	E+H electromagnetic
Dimension(mm*mm*mm)	1650*420*1328	1650*420*1328	1950*409*1353	1950*409*1353

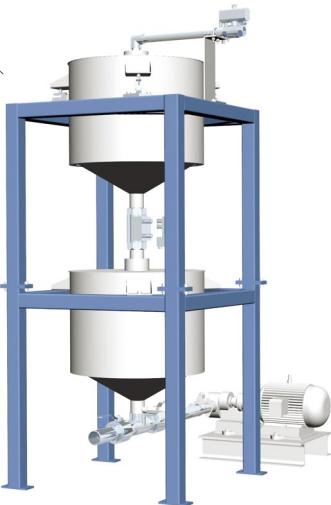
Model	MSGL40
	Oil
Flow rate(L/min)	42-225
Port size(mm)	DN40
Brand of Flow meter	Domestic
Dimension(mm*mm*mm)	1990*443*1383

Note: Choose suitable flow meter and pipeline according to the flow rate, normally the adding flow rate is 1/2 of maximum measuring range of flow meter.

## FAMSUN SYTC Series Scale Type Liquid Adding System

Load-cell weighing plus automated control, precise and reliable.  
Widely used for adding cohesive liquid such as molasses, fat/oil, phospholipid, etc. into a batch mixer.

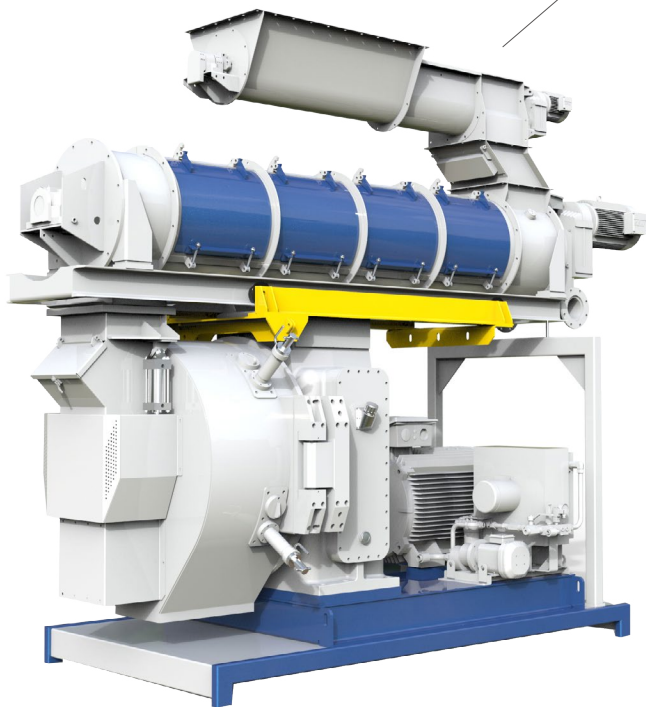
Model	Adding Rate (kg/min)	Power (kW)	Adding Precision (%)
SYTC50	50	2.2	0.5
SYTC100	100	3	0.5
SYTC150	150	5.5	0.5
SYTC200	200	5.5	0.5





# FAMSUN Pelleting Equipment

## FAMSUN SZLH Series Pellet Mill



**Gear-drive for reliable production**

High machining and installation precision of gear box contributes to reliable, precise and efficient transmission, bringing in stable production without failure downtime.

**High capacity and energy-efficiency**

Optimized pellet chamber and increased die working area are able to guarantee the consistent pellet quality, high capacity and lower energy consumption(energy consumption rate down to 6.3kW·h/t for poultry feed production).

**Smart control and easy operation**

Fuzzy logics is introduced to the controller of the pelleting system to optimize processing parameters, eliminate human factors and achieve more effective production.

Unique die changing and roller adjustment tools for easing labor.

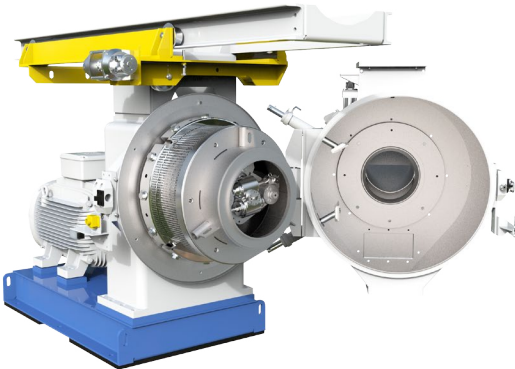
**User-friendly operation**

The design details based on CE standard such as overload protection, door protection, gearbox protection including oil level monitor and iron-remove structure, and guard cover ensure a safe, reliable and stable production.

Model	Power(kW)	Inner dia. of die (mm)	Driving mode	Die holding type	Qty of roller	Capacity (t/h)	Cooler for gearbox
SZLH885×330	355	885	Gear-drive	Clamp	2	50~55	Yes
SZLH685×245	250	685	Gear-drive	Clamp	2	35~40	Yes
SZLH575×210	200	575	Gear-drive	Clamp	2	20~25	Yes
SZLH535×190	160	535	Gear-drive	Clamp	2	15-20	No

Note: Capacity based on swine feed formula with die hole of Φ3.8 mm and 1:6.5 compression ratio.

## Automatic Remote Roll Adjustment System



The system can realize a remote, real-time and precise adjustment of gap between roll and die, which effectively saves time and labor. The whole adjusting gearbox is made of stainless steel. This design makes it hygienic, aesthetic and easy to clean. The system is driven by an air motor with gap memory function. After starting the machine, it is able to enter working status immediately.

**Save use cost**

When choke-up happens, using the system to separate rolls from die to protect equipment. When resuming production after shutting down, rolls can return to previous location quickly, which can improve production efficiency.

**Improve service life of accessory**

Gap between roll and die is controlled precisely to avoid abnormal wear caused by accidental contact.

**Safety**

Automatic remote control. No need to open pellet chamber during adjusting process.



## FAMSUN SZLH00 Series Pellet Mill

**Highly efficient pellet mill for poultry feed, livestock feed and aquafeed production.**

**High efficiency**

Stable two-motor timing belt drive, large torque but low noise; optimized area-to-power ratio of ring die, maximum output; triple rollers and cutters and stable production.

**Hygiene and safety**

CE certified standard design and available stainless steel conditioner for feed, human and machine safety.

**Flexible production**

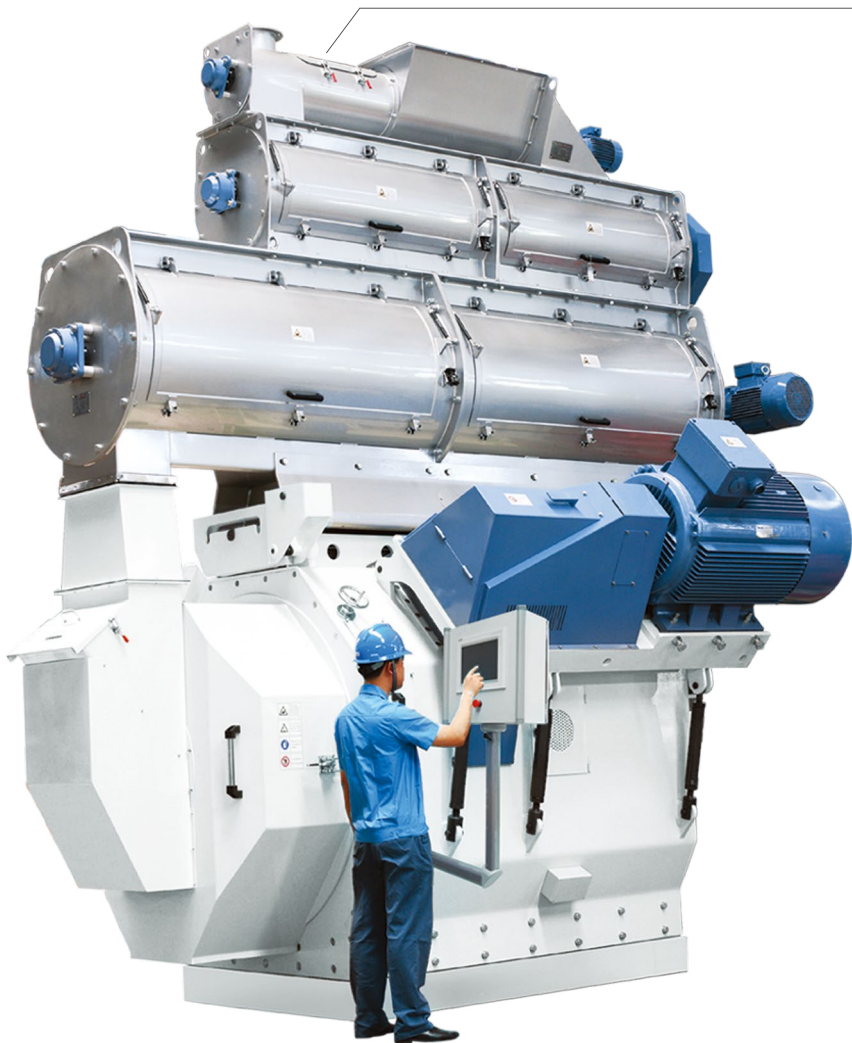
Wide product range: Φ1.5mm~Φ12mm pellets; conditioner with molasses and steam adding function.

**User-friendly operation**

Hydraulic system for die change and roller adjustment (optional), quick and precise operation; auto-lubrication system (optional) and die & roller lifting device, saved labor; on-site touch screen control.

Model	Inner Dia. (mm)	Ring die Pelletizing width (mm)	Roller number	Main motor power(kW)	Feeder motor power(kW)	Capacity (t/h)
SZLH550×170	Φ550	170	3	55×2/75×2	1.5/2.2	12-16
SZLH650×175	Φ650	175	3	90×2/110×2	2.2	16-23

## FAMSUN SZLH10 Series Pellet Mill



**Highly efficient pellet mill for poultry feed and aquafeed processing.**

**High efficiency**

Optimized area-to-power ratio of ring die, maximum output; 2-motor belt-drive featuring smooth running and low noise, optimal energy efficiency.

**User-friendly operation**

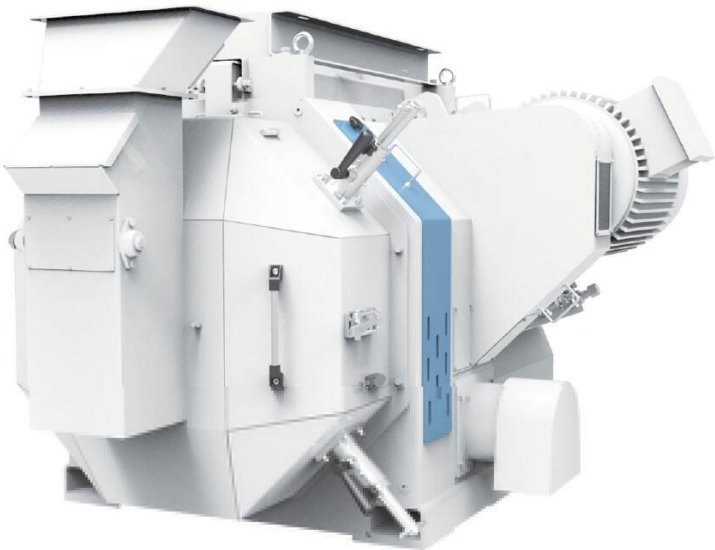
Wide product range: Φ2.0mm~Φ10mm pellets (optional); hydraulic die change and automatic roller adjustment, quick and precise operation, low labor intensity; hygienic and CE standard design for feed, human and machine safety; fully-automatic control.

**Good pellet quality**

Efficient conditioner, excellent pellet formability and durability; patented adjustable cutter.

Model	SZLH630×200
Main motor power (kW)	90×2/110×2
Feeder motor power (kW)	2.2
Capacity (t/h)	16-25
Inner Dia. of Die (mm)	Φ630
Pelletizing width (mm)	200
Roller number	2

## FAMSUN SZLH 460×160 Series Pellet Mill (V4)



**High-efficient pellet mill for producing feed for poultry and pigs.**

**Distinguished pelleting stability**

Unique double-timing belt driving and cooling system for motors output same torque simultaneously, sectional ring die clammer for fixing ring die onto rotor firmly, widened supporting area of main shaft as well as wearing reduction designed working parts, are all enabling long-time stable production.

**Superior pellet quality**

Conditioning system (optional) DDC Conditioner and/or STZW Hygienizer for longer retention time and more beneficial to gelatinization and sterilization of feed, contributing to consistent top quality products. Pellet size ranging from Φ2.0mm to Φ10.0mm.

**High output**

Optimized feed-to-pellet deflector structure, widened ring die working area (+15~25%) to enable consistent high output and low energy consumption.

**User-friendly**

Hydraulic system for die change and roller adjustment, quick and precise operation; auto-lubrication system and die & roller lifting device, saved labor; overload protection and door protection for human and machine safety.

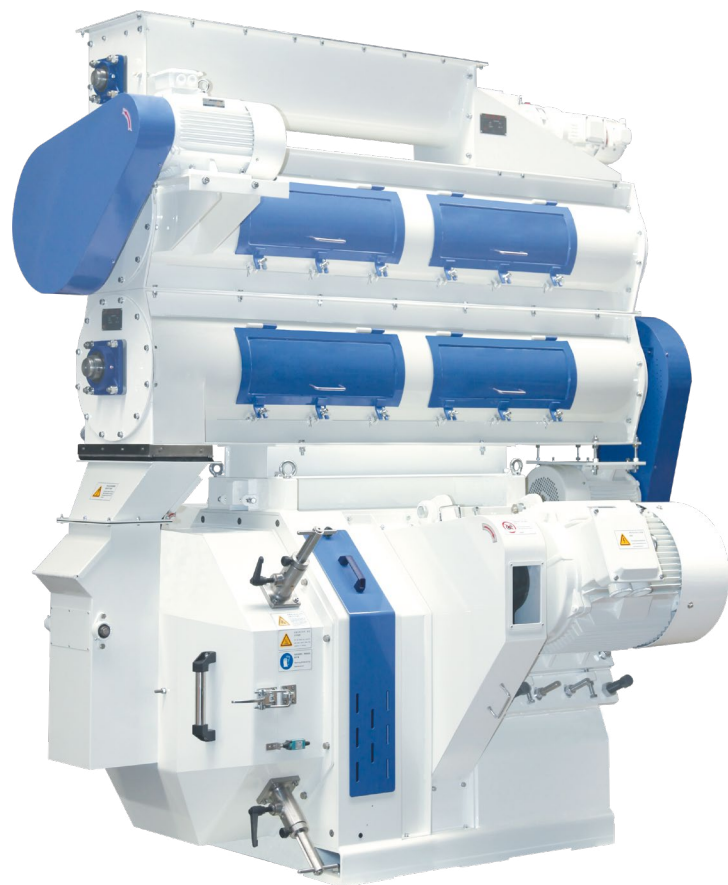
**Customized solution**

Optional of different conditioners and different ring die mounting patterns to meet different production demands.

Model	Inner dia. (mm)	Ring die Pelletizing width (mm)	Roller number	Main motor power (KW)	Feeder motor power (KW)	Capacity (t/h)
SZLH 460×160 (V4)	Φ460	160	2	55×2	1.5	8.0~14.0

Note: Above data refers to broiler feed production with Φ3.0mm die holes.

## FAMSUN SZLH 350/420 Pellet Mill



Time-tested pellet mill for processing feeds for livestock, poultry and fish.

**Power drive system for optimal energy efficiency**  
The robust two-motor belt-drive system allows for smooth operation, low noise and optimal energy utilization. The improved drive system simplifies maintenance.

**Cost-efficiency alternative thanks to small footprint, excellent performance**  
Superior compact design extremely slashes investment cost, enabling further line capacity expansion. Low operation cost thanks to easy maintenance, resulting in increased up time.

**Customer-oriented design**  
The optionally available die lift for the installation of ring die allows quick die change to the specific needs of the customer.

Model	SZLH350	SZLH420
Main motor power (kW)	30×2	55×2
Capacity (t/h)	2-6	6-12
Inner Dia. of Die (mm)	Φ350	Φ420
Roller number	2	2
Feeder motor power (kW)	0.75	1.5
Pellet size (mm)	Φ2-Φ10	Φ2-Φ10

## FAMSUN SZLH X Series Pellet Mill

High-efficient pellet mill for shrimp feed production.

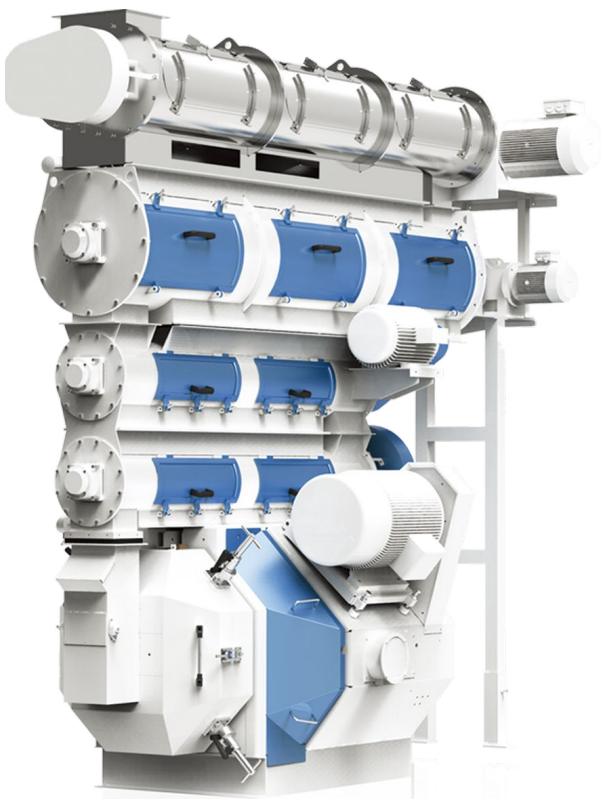
**Functional conditioner**  
Novel multi-pass functional conditioner for long retention time. It consists of pre-conditioner for mixing material and steam intensively, keeper for long time heat preservation to promote gelatinization, breaker to further unify feed mash structure, and the last-pass conditioner to ensure consistent and uniform discharge.

**Superior pellet quality**  
Thanks to the functional conditioners, conditioning times are lengthened to more than 5mins, which contributes to sufficient mixing and gelatinization and resulting in hygienic and consistent good quality of shrimp feed. Pellet size ranging from Φ1.2mm to Φ2.5mm, Starch gelatinization ≥45%.

**High output**  
Optimized feed-to-pellet deflector structure, widened ring die working area(+15~25%) to enable consistent high output and low energy consumption.

**User-friendly**  
Optional hydraulic system for die change and roller adjustment, quick and precise operation; auto-lubrication system and standard die & roller lifting device, saved labor; on-site touch screen control.

Model	SZLH650×175X	SZLH550×170X
Main motor power (kW)	90×2	55×2
Capacity (t/h)	4.5~5.5	3~5
Inner Dia. of Die (mm)	Φ650	Φ550
Roller number	3	2
Feeder motor power (kW)	2.2	2.2

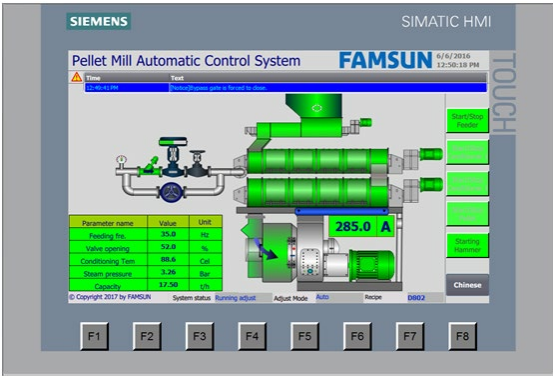
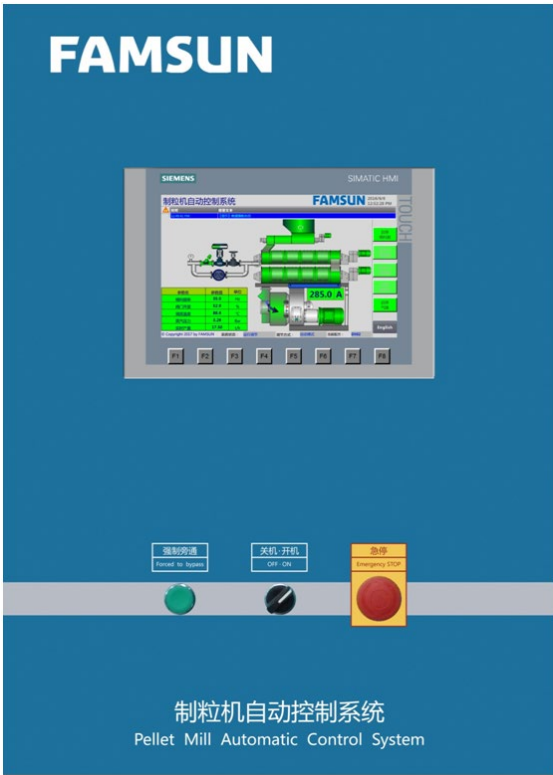


Shrimp feed pellets in different sizes





# FAMSUN Control System for Pellet Mill



FAMSUN pellet mill control system has been improving production efficiency, reducing energy and labor cost for hundreds of domestic and international clients since its release in 2010. Based on its smart control strategies, the system achieves excellent feed and steam rate adjustment like experienced operators. The system also has the advantage of one-key start function, instant auto/manual switch, anti-block, precise temperature control and auto stop when there's no product. Labor is significantly reduced and product quality is ensured.

- Central Control Operation (Optional)**  
System can be controlled in the central control room. Except start/stop process, it does not need an operator to be on-site.
- Data Collection, Reporting (Optional)**  
Collection detailed production data for inquiry. System can generate client customized report after each shift for management purpose.
- One-key Start, Auto Stop**  
Client can one-key start the pellet mill according to its condition. Stable time for hot start is 1.5 minutes and 3 minutes for cold start. The system can automatically stop when there's no product in the machine.

**Instant Auto/Manual Switch**  
During start up and running process, instant auto/manual mode switch can be achieved.

**Anti-block, Precise Temperature Control**  
Combine the FAMSUN initiated continues by-pass technology with active preventative methods, we can get rid of blocks and 'skidding' phenomenon. Conditioner temperature can be adjusted automatically according to the set-point value with accuracy of  $\pm 1.4$

**Stability**  
Developed based on Siemens S7-1200 PLC and KPI series touch screen with application of PROFINET technology. For steam valves we use Spirax Sarco products.

**Application**  
Majorly apply to FAMSUN pellet mill control, can be applied to third party pellet mill.

**Benefits**  
Reduce labor: For a factory with 3 pellet mill production line, it only requires 1 operator per shift.  
Increase production: Increase production by 5%-8% during each shift.  
Reduce energy assumption: reduce electricity assumption by 8%-10%.



# FAMSUN Conditioning Equipment

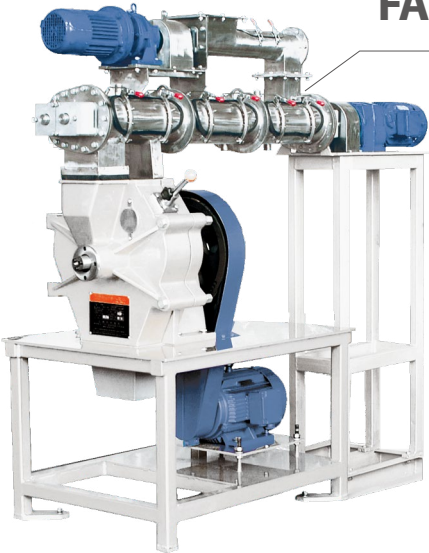
## FAMSUN SBTZ Series DDC Conditioner



Made of stainless steel.  
Long retention time: 60~90 s.  
High gelatinization: 45~50%.  
Large side access door design for easy cleaning and maintenance.

Model	SBTZ10	SBTZ33	SBTZ39	SBTZ45
Power (kW)	3	18.5	22	30
Capacity (t/h)	0.3-0.5	9-18	10-25	15-35

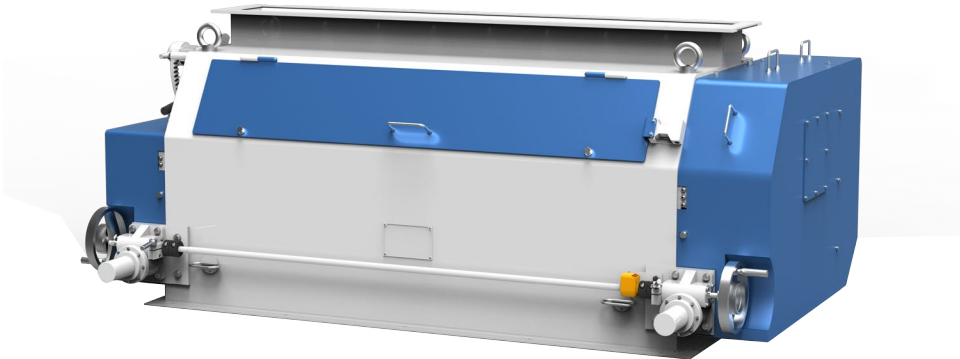
## FAMSUN Lab-size Pellet Mill



Mono roller and small inner diameter of die. Available with die openings varied from Ø2mm to Ø12mm, satisfying different experimental designs' requirements. Furnished with a stainless steel DDC conditioner, high-efficient conditioning achieved. Automatic control, precisely controlled adding rate and convenient data recording.

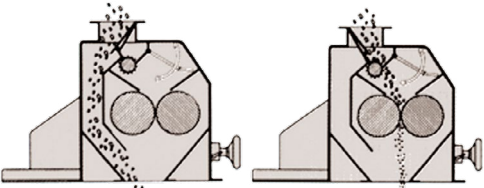
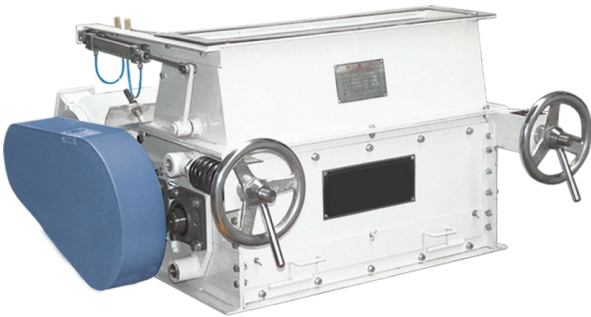
Model	MUZL180
Power (kW)	7.5
Capacity (t/h)	0.05-0.2
Inner Dia. of Die (mm)	Φ180
Roller number	1

## FAMSUN MUSL Series Crumbler



The most cost effective machine to produce small pellet feed for poultry, livestock and aquatic animals.

Material guiding design (optional) and adjustable roller gap for more flexible crumbling process, achievable pellet size as small as 0.8mm~1.5mm.

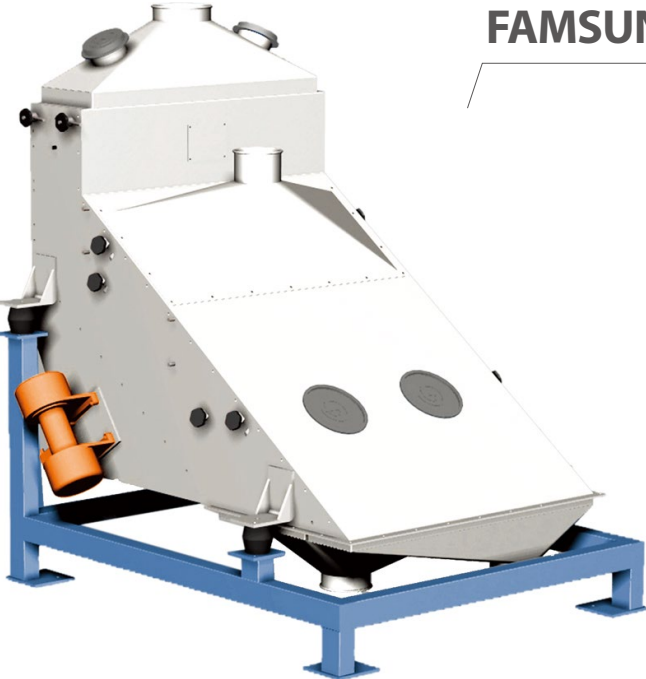


	MUSL	MUSL	MUSL	MUSL	MUSL	MUSL	MUSL	MUSL	MUSL	MUSL
Model	MUSL20×80	24×110B(X)	24×110B	24×110B( II )	24×165B( II )	24×165B	24×165B(X)	30×180B	30×180B(X)	30×180B( II )
Main motor power (kW)	7.5	11+1.5	11	7.5+1.1	15+1.5	15	15+1.1	22	22+1.1	22+1.5
Capacity (t/h)	5-8	10	10	2-4	20	20	3-6	28	4-8	28
Remark	2 rolls	3 rolls	3 rolls	3 rolls	3 rolls	3 rolls	3 rolls	3 rolls	3 rolls	3 rolls

Note: X represents the special crumbler for shrimp feed.



# FAMSUN Sifting Equipment



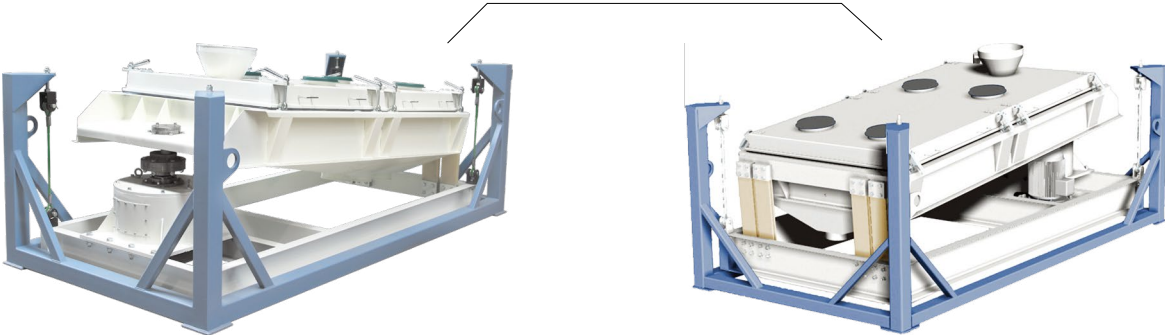
FAMSUN SFJZ Series Vibrating Sifter

The classic sifter for finished product in a pellet feed line.

Compact structure.  
Adjustable vibrating and low noise.  
Function of quick screen changing.

Model	SFJZ100×2	SFJZ125×1	SFJZ150×2	SFJZ150×2B
Capacity (t/h)	4-10	15	20-25	30-40
Power (kW)	0.2×2	0.37	0.55×2	0.55×2
Vibrational frequency (Hz)	960	960	960	960

FAMSUN SFJH Series Rota-shake Sifter



Suitable for the cleaning and grading treatment of powdery and granular materials or products in feed mills.

Balance weight, suspended elastic support, swing design and low noise.  
Easy change of screen.

Double-deck sifter, B type

Model		SFJH130×2B	SFJH140×2B
Capacity (t/h)	Pellet	14-18	20-22
	Mash	12-15	15-18
Power (kW)		3	4

Double-deck sifter, C type

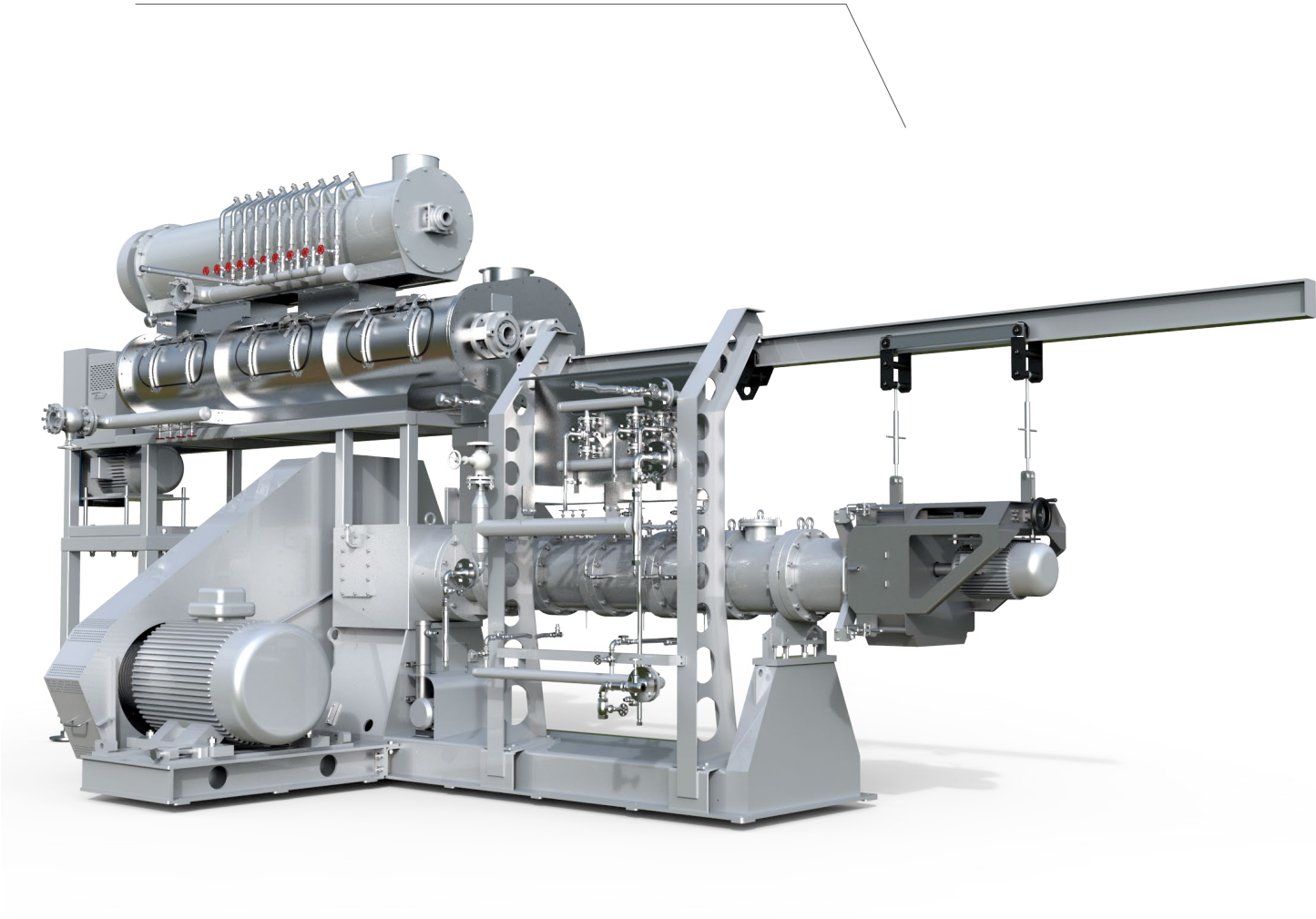
Model		SFJH80×2C	SFJH110×2C	SFJH130×2C	SFJH130×3C
Capacity (t/h)	Pellet	5-8	8-10	10-15	10-15
	Mash	4-6	6-8	10-13	10-13
Power (kW)		2.2	2.2	3	3

Triple-deck sifter, C type

Model		SFJH140×2C	SFJH153×2C	SFJH140×3C	SFJH153×3C	SFJH180×2C	SFJH210×2C
Capacity (t/h)	Pellet	14-18	22-26	14-18	22-26	25-28	27-30
	Mash	12-16	18-23	12-16	18-23	20-25	23-28
Power (kW)		4.0	4.0	5.5	5.5	7.5	7.5

# FAMSUN Extrusion Equipment

## FAMSUN SJPS Series Single-Screw Extruder



High-efficient extruder for aquafeed, food, pet food and raw material treatment.

**Simple operation**  
Leading extrusion technology and intelligent control; by-pass for avoiding blockage; simple operation, precise and reliable.

**High efficiency**  
DDC conditioner and optimal modular extruder screw & chamber, minimum Specific Mechanical Energy (SME) input; recoverable thermal energy, maximum energy utilization; unique suspending cutter, replacement and adjustment without downtime.

**Wide production range**  
Controllable temperature, pressure and density thanks to modularized design and many add-ons, minimizing reconfiguration acquired.

**Satisfying product quality**  
Uniform extruded pellets with high fat absorption, unique visual appearance, environmental friendly and sustainable.

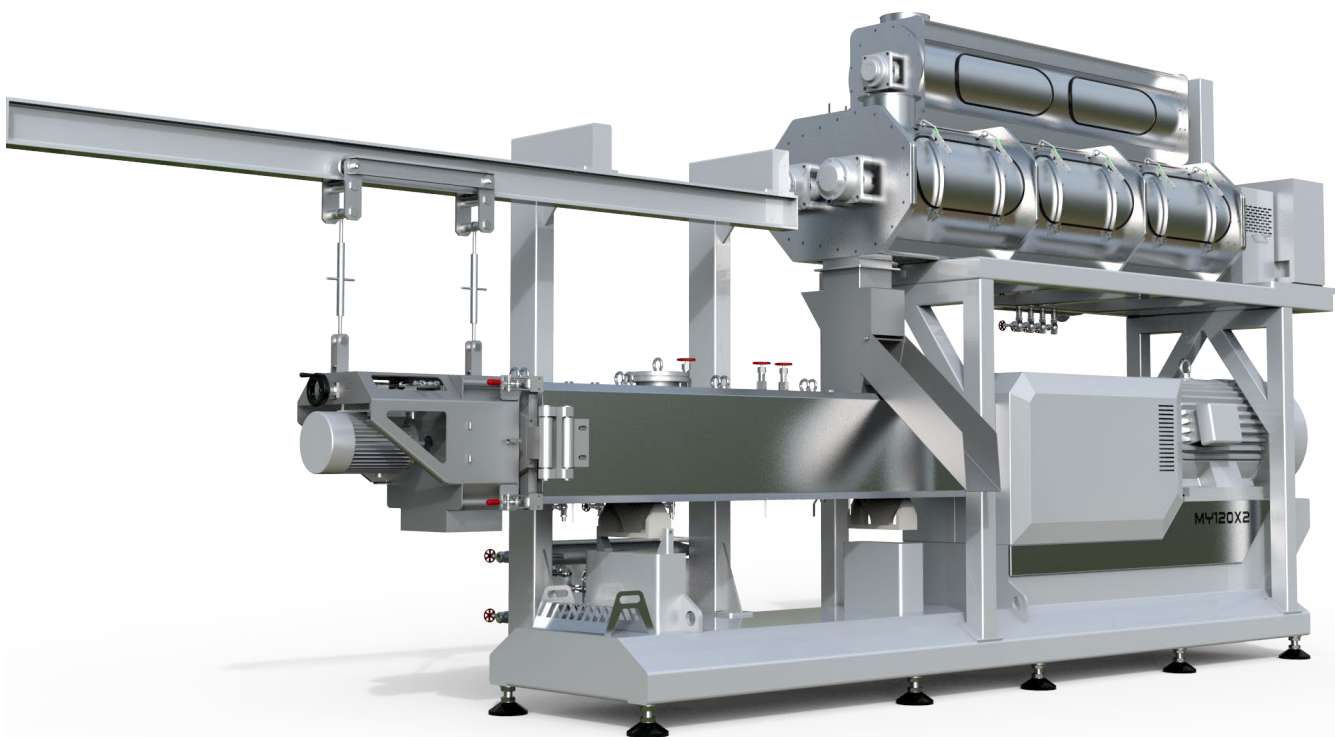
Model	SJPS135	SJPS165E	SJPS215	
Screw dia. (mm)	135	165	215	215
L/D	13.2:1	13.2:1	13.2:1	13.2:1
Main drive (kW)	90/110	160	250	315
Conditioner (kW)	15	11+18.5	15+22	15+30
Capacity (t/h)	Floating fish feed	1.8-2.2	4.5~6.0	8.0~10.0
	Pet food	1.8-2.2	4.5~6.0	8.0~10.0
	Sinking fish feed	1.2-1.5	2.2~3.5	4.0~6.0

Note: 1. the above data is based on the reference of the formula: starch≥16%,protein≥30%,fiber≤6%;Different raw material will affect the capacity.  
2. Productivity data comes from floating dies with orifice diameter 4.0mm and above.





# FAMSUN SJPS Series Twin-Screw Extruder



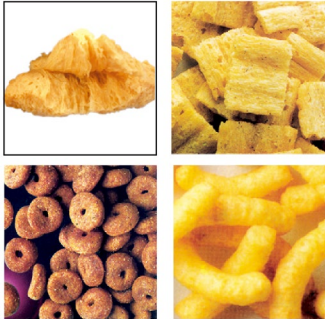
Highly efficient extruder for aquafeed, food, pet food and raw material treatment, especially sticky formulations.

**Easy operation**  
PLC and touch screen for convenient control; by-pass provided for avoiding blockage; easy operation, precise and reliable.

**High efficiency**  
Optimal chamber groove and screw flight profiles, minimum SME input; efficient DDC conditioner and jacketed barrel with stabilized and facilitated extrusion, maximum energy utilization; unique suspending cutter, adjustment without down time.

**More flexibility**  
Modularized barrel and screw structure with many add-ons, adaptable to varied high-fat or -moisture formulations; controllable temperature, pressure and density, minimizing reconfiguration acquired.

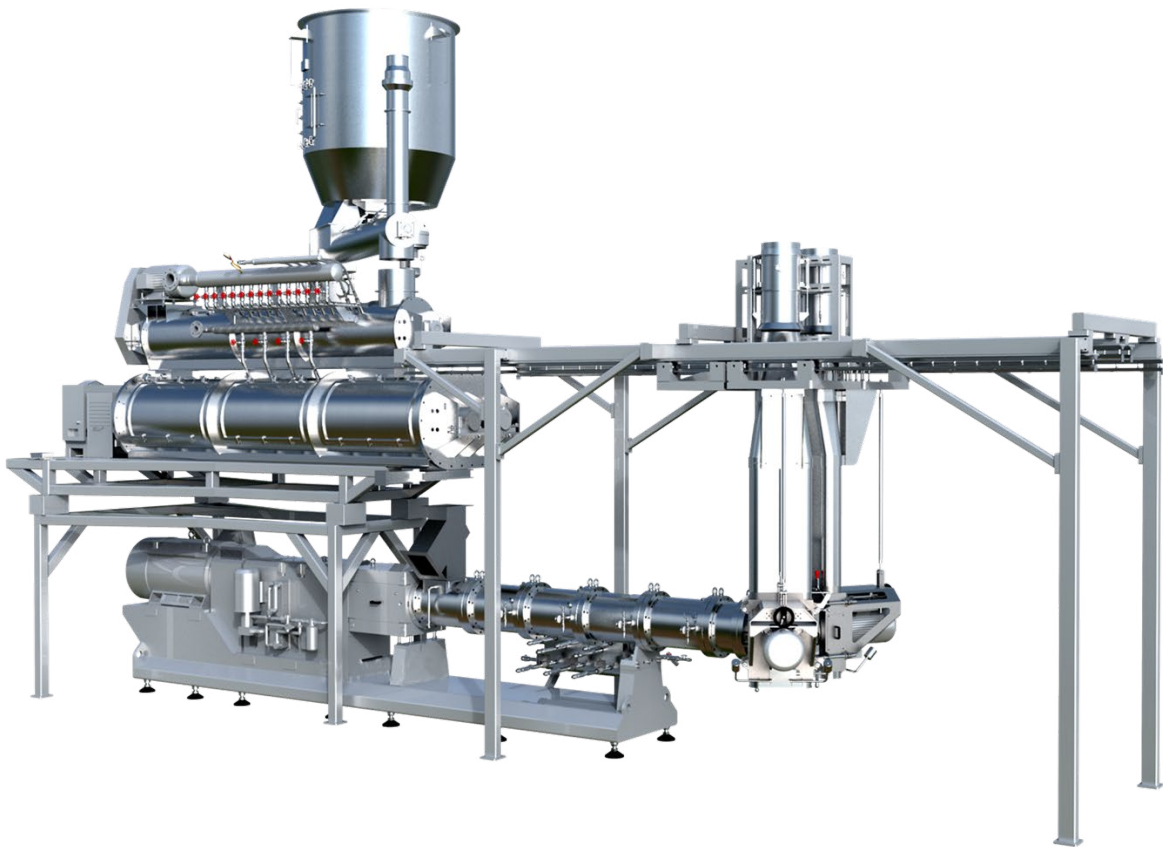
Model	SJPS90×2I	SJPS120×2I	SJPS150×2	SJPS166×2
Screw Dia. (mm)	100	132	146	166
L/D	20:1	16:1/20:1	20:1	16:1/20:1
Main drive (kW)	110/132	160/200	315	400/500
Conditioner power (kW)	11+18.5	11+18.5	15+30	15+45
Capacity (t/h)	Floating fish feed	2.0~3.5	5.5~7.5	10~11
	Pet food	2.0~3.5	5.5~7.5	10~11
	Sinking fish feed	1.5~2.0	3.0~5.0	5.0~7.0



Note: 1. the above data is based on the reference of the formula: starch≥16%, protein≥30%, oil and fats 4~6%, fiber≤6%; Different raw material will affect the capacity.  
2. Productivity data comes from floating dies with orifice diameter 4.0mm and above.



FAMSUN R160 Twin Screw Extruder



- Low efficiency, die plug, shut down frequently;
- Difficult to handle scrap, poor preconditioning effect;
- Difficult to control different recipes;
- Steam & Pellets leaking , poor operating environment;
- Poor control, difficult to train excellent operator;
- Intense labor required;
- .....

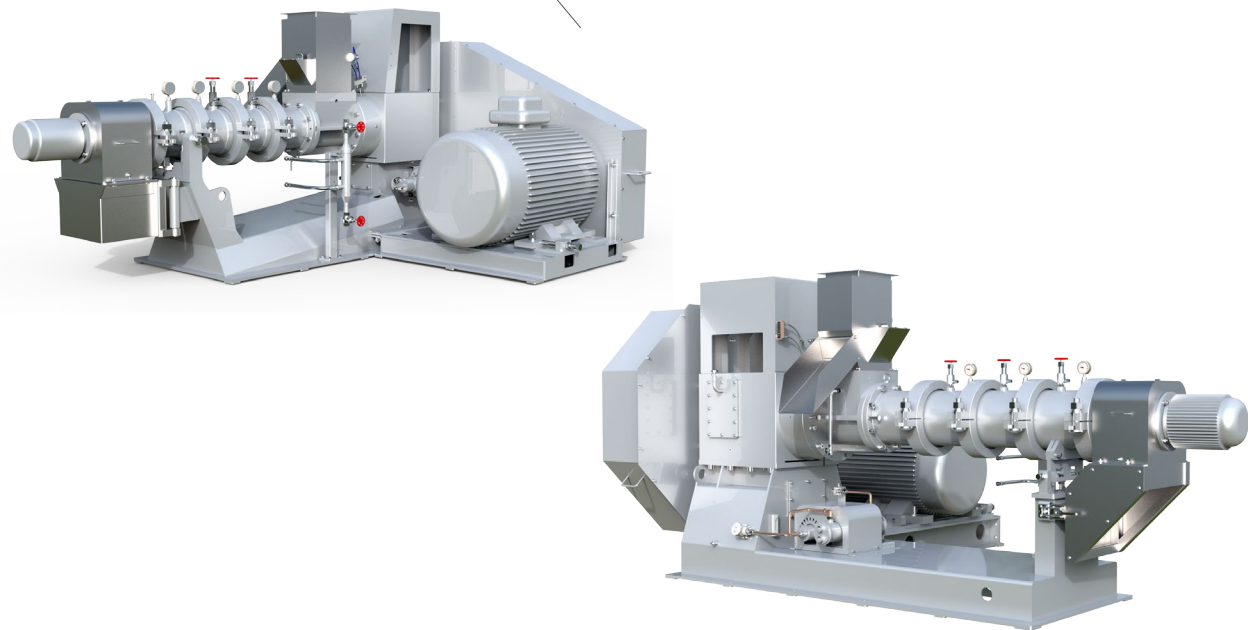


Model	Power	Capacity	
		Floating	Sinking
R160	315KW	9-11t/h	6-9t/h
Twin Screw	355KW	10-12.5t/h	6-9t/h
	400KW	11.5-14t/h	6-9t/h
Note	Dieφ3.0~5.0mm, normal fresh water floating feed recipe		Dieφ3.0~5.0mm, normal sinking feed recipe

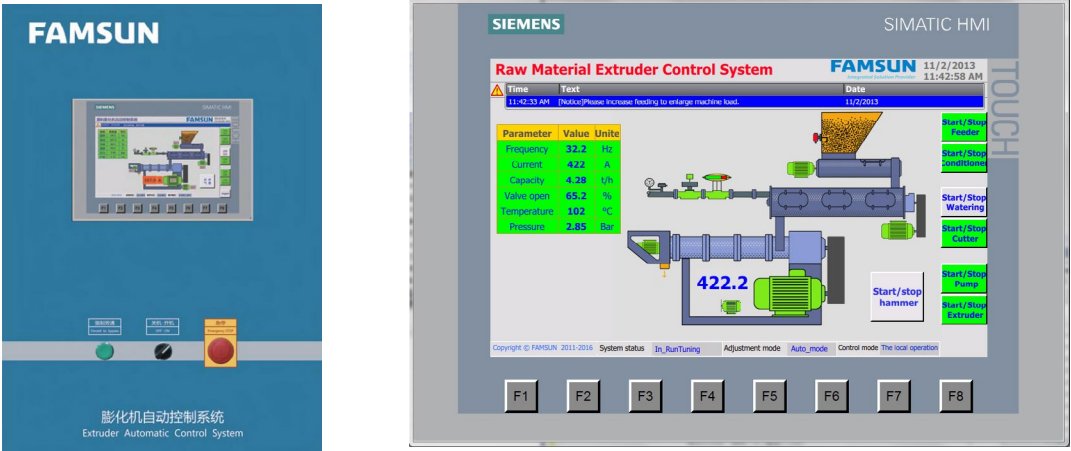




# FAMSUN TPHE200/260 Raw Material Extruder



# FAMSUN Control System for Raw Material Extruder



**Versatile extruder specialized for raw material treatment in feed and grain industry.**

**Wide applications**

Suitable for the extrusion of raw materials such as full-fat soy, corn flour, soybean meal, rice, rice bran, wheat , etc.

**Easy operation**

META system for optimum and convenient control;by-pass provided to avoid blockage; easy operation, precise and reliable.

**More flexible production**

Modular design with optional double-or single- flightscrews, shear locks and die plates (multi-hole or on-line adjustable single hole) for flexible put-together and easy product change.

**High efficiency**

Efficient conditioner and optimized configuration for desirable product, minimum thermal and mechanical energy input.

**High plant availability thanks to flexible and reliable control system**

Innovation bypass control technology in combination with material interrupt detector and anti-bridging device, fast and accurate localization of material blockage in advance, minimizing downtimes and increasing productivity.

Adjustable process parameters, seamless and flexible integration between automatic and manual operation, maximally optimizing productivity.

Interlock functions on various operating interface considerably prevent error operation, contributing to security processing.

Integrated control system on basis of Siemens S1200 Series PLC and KTP 1000 Series touch-panel, making for low maintenance and top operation reliability.

**User-friendly operation via intuitive design**

Centralized monitor, visualization of the process and intuitive user operating interface.

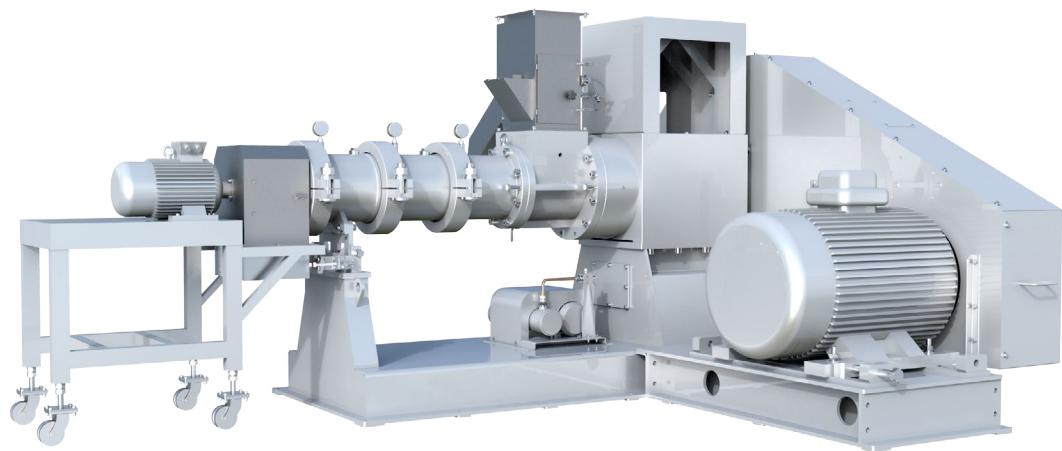
Pre-setting job procedure integrates for best possible product quality, thus automatic setting and management of the extruder is available, reducing the workload of operator.

**Efficient energy management delivers cost-efficiency**

Energy consumption per ton of material can be effectively reduced up to 21%.

Model	Power (kW)	Screw dia.(mm)	Capacity (t/h)	
			Corn	Soy
TPHE200	110/132	200	1.5-2.0	2.5-3.5
TPHE260	250	260	3.0-3.8	4.0-6.0

## FAMSUN PHYE260 Raw Material Extruder



Extruder specialized for corn extrusion.

**Excellent product quality thanks to optimal process flow**

Angle-adjustable conveying paddles deliver more uniform mixing and higher efficient conditioning. Elaborate process flow functions as sterilization and gelatinization, improved product quality and feed conversion, and absorption characterization, reduced cross-contamination.

**Economic alternative for high capacity and low energy consumption**

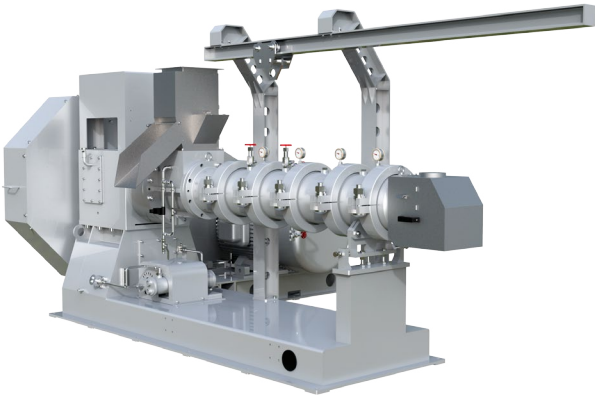
Highest possible production capacity and minimized energy consumption; corn extrusion throughput of up to 4.2 t/h and up to 21% reduction of energy consumption are possible.

**User-friendly operation lies in smart structure design**

Innovative rail device for suspending cutter device enables gap adjustment at all time, easy and fast operation, reduced workload of operator. Unique three bearings arrangement concept and cyclic oil lubrication system etc. guarantee longer service life, with minimized maintenance requirements.

Model	Power (kW)	Screw dia.(mm)	Capacity (t/h)
PHYE260	250	260	3.5-4.2

## FAMSUN PHDS260 Soybean Extruder



**Scope of application**

PHDS 260 Soybean Extruder is mainly used for extruding high oil raw material such as full fat soybean, rapeseed, peanut, flaxseed and castor seed etc.

**High capacity, low energy consumption**

With 8:1 length-to-dimension ratio (6 barrels), optimum screw and outlet configurations, PHDS 260 Soybean Extruder is more advantageous to pre-process raw material of high protein and high oil. Its capacity is also greatly improved, for full fat soybean, its capacity surpasses others by 20%, the energy consumed for one ton product is 26-30kW·h;

**Stable quality**

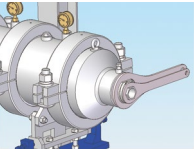
PHDS 260 Soybean Extruder can treat anti-nutritional factor thoroughly, and easily keep urinary enzyme activity under 0.1 while ensure the same performance; while keeping urinary enzyme within standard, it also improves protein utilization rate: the protein solubility is up to 78-85%. "Low temperature extrusion" effectively avoids Maillard Reaction, improves utilization rate of amino acid and vitamin.

**Safety, Stability, Easy access**

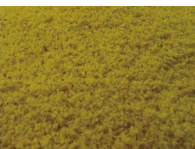
Core bough-in components are all world-class brands, to ensure safety and stability of operation; the screw is fabricated with new process technology, production cost is greatly reduced as screw service life is extended by 2.5-3 times. It has a patented adjustable discharge device, which can control product quality in real time.



New wear-resistant alloy screw



Real time adjustable discharge device



Extruded soybean

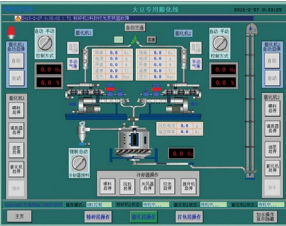
**Options**

**Automatic control system**

Simplified operation, low manual labor intensity; All data is recorded to reduce human factors on extruded product quality to the lowest; Globally advanced control components to ensure system stability, accuracy and sensibility.

**Hydraulic discharge device**

Optional hydraulic discharge device provides easy access and reduces manual labor intensity.



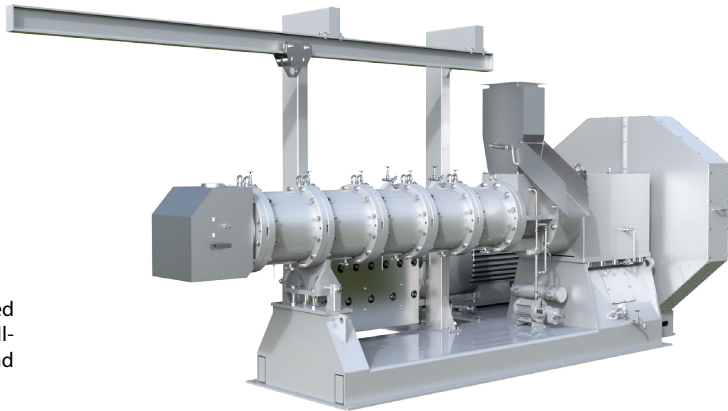
Items	Parameters	
Screw nominal diameter(mm)	260	
Main motor power(kW)	200/250	
Feeding bin power(kW)	3	TXLP120B(Recommended)
Feeder power(kW)	1.5/2.2	
Conditioner power(kW)	MDTZ260+SCTZ33	
Oil pump motor power(kW)	0.75	
Capacity	1. 7.5-9(Urinary enzyme 0.01-0.1, main motor power 200kW) 2. 9.5-11(Urinary enzyme 0.01-0.1, main motor power 250kW)	
Energy consumption(kWh/t/h)	25-30	

Note: For extruder with power of 250kW, we recommend MDTZ260+SCTZ33 conditioner. If there is high requirement for extruded soybean, we recommend SPTZ38 three-shaft conditioner, it will contribute to improving of both capacity and finished product quality.



# PHDS320 Soybean-Exclusive Extruder

PHDS320 Soybean-Exclusive Extruder is mainly applied on the raw material with high content of fat, like full-fat soybean, rapeseed, peanut, cottonseed, flaxseed and castor seed.



## High rate, low power consumption

PHDS320 Soybean exclusive extruder uses L/D ratio 9 1 (6 barrels), with optimized screw and discharge configuration, can deal with raw material with high protein and fat better, and the rate is increased. It’s the first large-scale full fat soybean exclusive extruder domestic, the rate is 18t/h with 19 22KW.h/t. Achieves high rate with low power consumption.

## Stable quality

Complete deal with Anti-nutritional factors, the urease activity can be control under 0.1 easily with the rate being ensured. Protein solubility can be controlled around 78%~85% with ensure the soybean urease index requirement, which increase the utilization of protein. Avoid the Maillard reaction by applying “Low Temperature Extrusion”,thus increase the utilization of amino acid and vitamin.

## Increased safety, stability and operational convenience

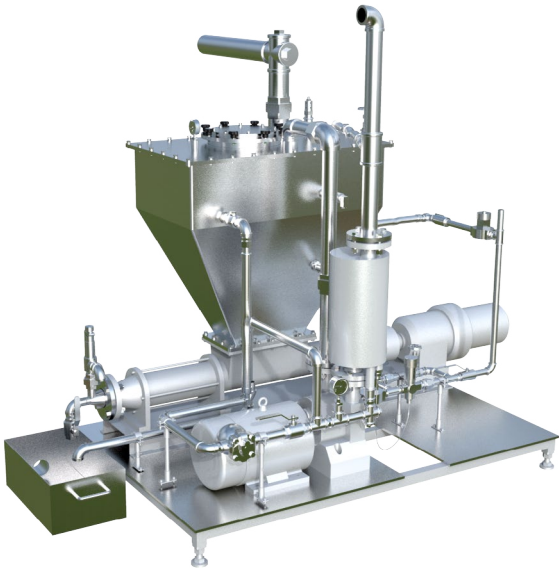
Core purchased parts are using first-grade international brands, make sure the safety and stability. New processing technology is applied on screw, to increase the abrasive resistance and lengthen the service life 2.5-3 times, which reduces the cost effectively; Patented technology—Adjustable single hole discharge system, to control the quality in real time.

Item	Unit	Parameter	Note
Screw diameter	mm	320	
Motor power	kW	400/450	
Anti-Bridging bin	kW	5.5	TXLP180B(Recommend )
Feeder power	kW	5.5	
Pre-conditioner power	kW	22+30	SCTZ39+SCTZ45
Oil pump power	kW	30+30	SCTZ45+SCTZ45
		0.75	
		1. 20t/h □urease activity 0.1 ~ 0.2	
Rate	t/h	2. 18 ~ 20t/h □urease activity 0.05 ~ 0.1	
		3. 16 ~ 18t/h □urease activity 0.01 ~ 0.05	
Power/ton	kWh.t/h	20 ~ 25 kW.h/t	

Note: SCTZ39+SCTZ45 preconditioner is standard configuration when extruder motor power is 400kw. SCTZ45+SCTZ45 preconditioner can be configured when customer has higher product requirement.

# SMTZ50B Density Management System (DMS)

SMTZ50B DMS is used with extruder together, for processing the extrudates with high bulk density (like sinking aquafeed and nutritive rice). It can increase the bulk density of extrudates effectively, increase the rate of extruder and have better extrudates with better appearance.



## Matched extruder

SMTZ50B DMS assembles with the de-gas port on extruder, to take the energy and steam away from the processing of material gelatinization, and reduce the pressure before die, thus acquires the extrudates with high bulk density and increases the extruder rate. SMTZ50B can match FAMSUN single/twin extruder.

## Increase bulk density and appearance

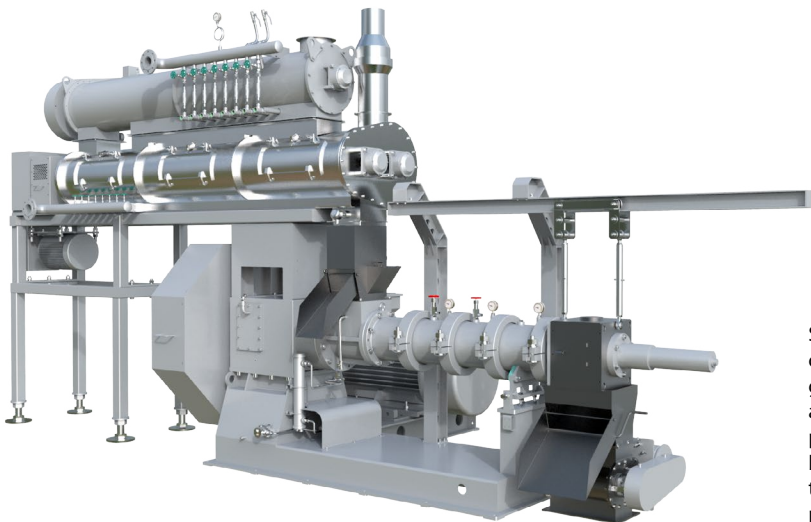
The bulk density can be increased 50~80g/l when SMTZ50B is used for producing sinking feed, as well as increase the extrudates uniformity with darker color. Thus, the color of aquafeed is becoming from light gray to dark brown, and with smoother surface.

## Increased safety and reliability

SMTZ50B DMS is operation friendly. Safety valve is installed at the output of cavity pump to ensure the normal operation of pump without being damaged. Vacuum safety valve is assembled above the vacuum barrel, to ensure the safety and reliability. High and low liquid level protection switch is installed inside the vacuum tank, the alarm will be sent if the water level is abnormal, thus to ensure the normal operation.

Item	Parameter	Note
Vacuum screw power(kW)	1.5	VFD
Water-ring vacuum pump(kW)	5.5(50hz)/8.5(60hz)	
Cavity pump (kW)	2.2	VFD
Vacuum degree (Mpa)	0~ -0.07	

## SXPS260 Poultry feed Extruder



SXPS260 Poultry feed extruder is mainly used on pre-processing of extrusion, and online gelatinization degree adjust can be achieved according to the requirement to increase the product quality and hygiene requirement. It's being applied widely in whole-extrusion low-temperature pelleting on piglet creep feed production.

### Hydraulic discharge system

Hydraulic discharge system can achieve online adjust gelatinization degree, increase the convenience and reduce the labor intensity.

### High rate, low power consumption

SXPS260 uses L/D 7:1 (5 barrels), with optimized screw configuration and hydraulic discharge system. 40~75% finished product gelatinization degree adjustable, which increases the rate largely. The rate has 20% higher with power consumption 15~20% lower compare to competitor under same quality.

### Increased safety, reliability and operational convenience

Core purchased parts are using first-grade international brands, make sure the safety and stability. New processing technology is applied on screw, to increase the abrasive resistance and lengthen the service life 2.5-3 times, which reduces the cost effectively

Item	Parameter	Note
Screw diameter(mm)	260	
Motor power(kW)	200	
Anti-bridging bin(kW)	2.2	TXLP120B(recommend)
Feeder power(kW)	1.5 / 2.2	
Preconditioner power(kW)	7.5+7.5+7.5	
Oil pump power(kW)	0.75	
	10~12(gelatinization degree 60~70%)	
Rate(t/h)	12~14(gelatinization degree 50~60%)	
	14~16(gelatinization degree 40~50%)	
Power consumption(kW·h/t)	16~25	

Note: SPTZ39 triple-shaft preconditioner or MUTZ600JCJ (multi-point) + STZL + MUTZ600JCJ (single-point) is required; gelatinization degree is for finished product.  
Gelatinization degree is around 60%~70% for creep feed; 50%~60% for nursery feed.

## FAMSUN Drying, Cooling and Stabilizing Equipment

### MJ Gas Dryer



- 1 The design is directed by senior experts of Famsun US R&D Institute
- 2  $\pm 0.5\%$  moisture deviation for 3~6mm die regular floating fish feed and pet food
- 3 11-14 m<sup>3</sup>/t Gas energy consumption for 3~6mm die grass carp feed consumption
- 4 The dryer has wide application range and can be used for drying various aquatic feed pet food and food particles
- 5 The design is based on NFPA86 regulations and Europe and America environmental sanitation standard
- 6 Selecting international high-end brands for the Gas system burner and valves check and interlock accurately to ensure the safety and reliability of the system.
- 7 The motor direct drive cycle fans low noise high transmission efficiency more stable operation
- 8 Quick and easy installation low maintenance requirements easy to maintenance.

### MJ Gas Dryer configuration

Content	Standard Configuration	Optional
Conveyor belt structure	Crawler plate□stainless steel□	Screen mesh
The parts material direct contacting with the material	Stainless steel	
The dryer outer seal panel and door plank material	Stainless steel	Carbon steel
Reducer brand	SEW	The same grade brand
Bearing brand	FAG	The same grade brand
Fan brand	Europe and America imported	Domestic high-end brand
Gas system burner and valve brand	The international high-end brand	
Supporting feet height	750mm	Other height

### MJ Gas Dryer selection reference

The dryer model	3~6mm die regular floating fish feed	3~4mm die regular sinking fish feed	3~6mm die pet food
	Refer to the capacity(t/h)	Refer to the capacity(t/h)	Refer to the capacity(t/h)
M4(Drying section length 4m)	3.5~4.5	1.5~2.0	4.8~5.2
M6(Drying section length 6m)	5.0~6.0	2.0~2.5	5.5~6.5
M8(Drying section length 8m)	7.0~8.0	3.0~4.0	7.5~8.5
M11(Drying section length 11m)	10.0~11.0	4.0~5.5	10.5~11.5
M14(Drying section length 14m)	12.0~13.0	5.5~7.0	12.5~14.0
M20(Drying section length 20m)	18.0~19.0	8.0~10.0	18.5~20.0



# FAMSUN SDZB 3000 (MJ) Series Dryer



Cost -effective dryer for extruded aquafeed and pet food processing.  
High drying efficiency and less space occupation.  
Zoned structure and multiple choices for number of levels of conveying bed (from one to three).  
US standard sanitary design for pet food applications.  
Advanced controlling system achieving less risk in quality,less requirement on labor intensity and skill, and more enjoyable operation experience with MJ dryers.  
Selectable heat source of steam or gas according to customer requirements.

**Small Moisture Deviation in Processed Pellets**  
±0.5% for 3-8mm die size floating fish feed and pet food pellets; varying directions of air flow passing through pellets in different zones; verified air flow pattern inside the dryer.

**Low Energy Consumption**  
180-220 kg/t for 3-5mm die size freshwater floating fish feed.

**High Reliability**  
Top-quality heat-exchanger with dust filter for steam dryers with customized anti-corrosion technology for long service life; top-quality direct-drive recirculation fans with customized air volume and pressure for your applications; top-quality gas burning system for gas dryers with 100% security and minimum residual of gas combustion.

**Sanitary design and feed (food) safety**  
Self-cleaning device avoiding cross contamination; self-discharging of dust by customized configuration of screw conveyors; no blind corner inside the dryer ensuring complete cleaning of dryer with proper tools.

**Advanced controlling system**  
Accurate control of drying temperature (fluctuation less than ±2℃); formula management function; one-press start/stop; automatic recording of steam/gas/electricity consumption; air humidity control system .

Model	SDZB3000-8	SDZB3000-11	SDZB3000-14
Capacity (t/h)	6-8	9-11	11-13
Total power (kW)	66.5	80.8	96.5
Steam consumption (Kg steam/t feed)*		180-220	
Moisture deviation (%)**		±0.5%	

Note:  
\* Moisture drop less than 12% between dryer inlet and discharge for 3-5mm die size fresh water fish feed.  
\*\* 3-location sampling for 3-8mm die size floating fish feed and pet food pellets.

# FAMSUN SKLN Series Counterflow Cooler



Widely used for cooling granular feed.

Compact structure, small space occupied.  
Octagonal cooling bin, eliminating death corner.  
Reciprocating grid for smooth and uniform discharge flow.  
Little maintenance required and low energy cost.

Model	SKLN16×16	SKLN19×19	SKLN22×22	SKLN24×24	SKLN28×28
Power (kW)	0.75	1.5	1.5	1.5	1.5+0.75
Capacity (t/h)	7.5	10	10-13	13-18	18-23

## FAMSUN SLNF Series Tipping Type Counterflow Cooler (Type A)



Suitable for cooling granular feed, especially the extruded pellets

Compact structure, small space required.  
 Octagonal cooling bin, eliminating dead corner.  
 Hydraulic flexible driven tipping plates for smooth and controllable discharging rate.  
 Little maintenance required and low energy cost.

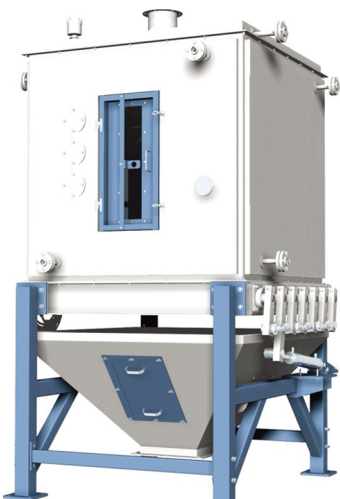
Model	SLNF19×19A	SLNF22×22A	SLNF24×24A	SLNF28×28A	SLNF32×32A	SLNF36×36A
Power (kW)	1.5	3	3	3+0.75	5.5+0.75	5.5+0.75
Capacity (t/h)	10	10-13	13-18	18-23	25-30	30-35

## FAMSUN SWDB Series Swing Type Pellet Stabilizer

Effective stabilizer to improve water stability of aquafeed pellets.

Steam pipes for heat preservation, uniform heating.  
 Hydraulic controlled tipping plates, controllable and smooth discharge.  
 Large access door in front side, ease of cleaning and maintenance.

Model	SWDB14×14A
Efficiency Volume (m³)	1.5
Capacity (t/h)	2-3
Heat Preservation Time (min)	30
Power (kW)	1.5+0.75



## FAMSUN SLNF28×28B Swivel Counter-flow Cooler



High-efficiency cooler for the application of a variety of materials with good cooling uniformity and high operation reliability

High-efficiency and uniformity  
 Strong and wide applicability  
 Modularized design  
 Excellent configuration

		Pellet diameters			
Model	Output, t/h	2-4mm	5-7mm	8-11mm	12-16mm
		23	18	16	14
Air volume, m³*(t/h)		1200	1400	1500	1600

Note: 1. Referenced bulk density: 0.64kg/L. Fines content of incoming product 5%.  
 2.Product temperature ≤(ambient temperature +5) , moisture reduction: 2-3%.



# FAMSUN Liquid Coating System



## FAMSUN YPLV Series Continuous Liquid Coater

Fully automatic control, easy operation;  
Short-time overload function, adaptable to varied production capacity;  
Frequency inverter for volumetric and gravimetric material flow control, precise liquid adding rate and evenly coating.

Model	Capacity (t/h)	Power (kW)
YPLV80	0.5-8	1.1+1.2
YPLV100	1-15	1.1+3
YPLV135	10-25	1.5+5.5



## FAMSUN PTZL Series Vacuum Coater

Vacuum coater for the application of oil or fat, pigments, flavors, functional improver, vitamins, etc. onto pellets after drying and/or cooling.  
Aquafeed and pet food in particular.

Model	PTZL2000	PTZL3000
Screw rotor power(kW)	15	18.5
Vacuum pump (kW)	22	22
Capacity (t/h)	4-8	6-12
Working vacuum (mbar)	-800mbar to atmosphere (adjustable)	
Limited vacuum (mbar)	-950mbar	
Liquid addition	1%-36% of dry material weight	
Batches per hour	10 batches	



## FAMSUN PTCL Vertical Coater

Vacuum coater for the application of oil or fat, pigments, flavors, functional improver, vitamins, etc. onto pellets after drying and/or cooling. Aqua feed in particular. It mainly designs for low oil amount spraying spraying amount 1%~6% .

Model	PTCL2000	PTCL3000
Screw rotor power(kW)	15	18.5
Capacity (t/h)	8-10	10-15
Liquid addition	1%-6% of dry material weight	

# FAMSUN Proportioning System

## FAMSUN LCS Proportioning System

Computer and PLC control, accurate batching and reliable performance.  
Possible of including 1-4 scales, flexible combination if required.  
Good for improving production capacity and operation reliability.  
Widely adopted in feed, flour, fertilizer and cement industries.

Weighing range (kg)	50, 100, 250, 500, 1000, 2000, 3000, 4000
Weighing precision	static 0.1% FS, dynamic 0.3% FS



## FAMSUN Micro Proportioning System

Computer and PLC control, accurate batching and reliable performance.  
Possible of including 1-4 scales, flexible combination if required.  
Good for improving production capacity and operation reliability.  
Applicable for premix or supplement batching.

Weighing range(kg)	10-200
Weighing precision	static 0.03% FS, dynamic 0.05% FS



# FAMSUN Bagging Equipment



## FAMSUN LCS series micro-control quantitative packaging scale

- Apply special anti-vibration device, guaranteeing the measuring accuracy; the packaging speed is high and accuracy is stable;
- Its key parts all come from imported brand, which are high quality and have long service life;
- Automatic zero calibration, which can automatically clear value to zero;
- Use valve to feed materials, which is easy to maintain and has the advantage of simple structure;
- Scope of application: granular and crystalline materials with good flowability.

Model	ZDC50	Model	ZSC50
Weighing range(kg)	20~50	Weighing range(kg)	20~50
Weighing speed(bag/h)	400~600(Volume-weight of the material is 0.7)	Weighing speed(bag/h)	500~900(Volume-weight of the material is 0.7)
Hopper volume(m³)	0.12(Finite volumer is 96L)	Hopper volume(m³)	0.12(Finite volumer is 96L)
Scale value displaying(g)	10	Scale value displaying(g)	10
Accuracy	X(0.2)	Accuracy	X(0.2)
Total power(kw)	0.3(Conveying without bag sewing)	Total power(kw)	0.3(Conveying without bag sewing)
Compressed air	0.5~0.6MPa, 20m³/h	Compressed air	0.5~0.6MPa, 20m³/h



## FAMSUN LCS series micro-control quantitative packaging scale (screw conveyor with double hoppers)

Packing specification(kg)	25, 50
Static accuracy(%)	0.1%FS
Dynamic accuracy (%)	0.2%FS
Packing speed(bag/h)	400~600

- Apply special anti-vibration device to ensure the measuring accuracy, and be able to work stably under complicated working conditions;
- External adjustment machine, which is easy to maintain;
- Its key parts all come from imported brand, which has strong ability of anti-disturbance and long service life;
- Real-time head drop modifying, digital calibration as well as automatic zero tracing;
- It can realize both functions of fast feeding and slow feeding corresponding to big and small screw conveyor, which is suitable for package of powder materials.

# FAMSUN Intelligent palletizing robot



	CP130L	CP180L	CP250L	CP300L
Arm pattern				Vertical multi-joint type
Operation DOF				4
Maximum load capacity (kg)	130	180	250	300
Maximum stroke (°)	Arm rotate(JT1)			±160
	Arm move forward and backward (JT2)			+95~46
	Arm move up and down (JT3)			+15~110
	Wrist rotate(JT4)			±360
Maximum speed (°/S)	Arm rotate(JT1)	140	130	115
	Arm move forward and backward (JT2)	125	120	100
	Arm move up and down (JT3)	130	125	100
	Wrist rotate(JT4)	400	330	250
Working rage (mm)	left and right			1800
	Front and rear			1600
	Upward and downward			2200
Inertia moment (kg.m²)	50	85	100	140
Maximum transporting capacity (times/h)	2050	1800	1700	1500
Repeatability positioning accuracy (mm)				±0.5
Body weight (kg)				1600

- Flexible design, intelligent control**  
The intelligent robot has the advantage of flexible operation. The single machine can process production lines of up to six at the same time, which can automatically calculate the reasonable trajectory, and has higher stacking capacity;  
It is completely touch screen controlled, has friendly human-machine interface, and is easy to operate;  
When product on the production line changes, all you have to do is input new data. New path can be calculated and run;
- Be excellent in structure and easy in maintenance.**  
The robot requires little installation space so as to be able to be placed in small space, to achieve the most practical application;  
The palletizing robot is outstanding in structure design, has low failure rate owing to simple parts, which contribute greatly to easy maintenance.



# FAMSUN Dust Control Equipment

## FAMSUN BLMB Series High Pressure Jet Filter Dust Collector

Features: Design with dust pre-settlement, prolonged service life of filtering bags; quick bag changing device, ease of use.  
Application: Dust collection on a dumping pit, a pneumatic conveying system and etc.  
Working air-pressure: 0.5-0.7 MPa.  
Filtering area (optional): 3m<sup>2</sup>, 6m<sup>2</sup>, 12m<sup>2</sup>.

Model	BLMB4A	BLMB6A	BLMB8A	BLMB12A
Filtering area(m <sup>2</sup> )	3	6	8	12
Air volume(m <sup>3</sup> /h)	360-720	720-1440	1080-2160	1440-2880



## FAMSUN TBLM<sub>y</sub> Series High Pressure Jet Filter Dust Collector

Features: With flat filtering envelopes, compact structure and small footprint.  
Application: Dust collection on conveying equipment.  
Working air-pressure: 0.5~0.7MPa.  
Filtering area (optional): 5.6m<sup>2</sup>, 10.5m<sup>2</sup>, 17.5m<sup>2</sup>, 25.2m<sup>2</sup>, 36.4m<sup>2</sup>, 53.2m<sup>2</sup>, 75.6m<sup>2</sup>, 109.2m<sup>2</sup>.

Model	TBLM <sub>y</sub> 8	TBLM <sub>y</sub> 15	TBLM <sub>y</sub> 25	TBLM <sub>y</sub> 36	TBLM <sub>y</sub> 52	TBLM <sub>y</sub> 76	TBLM <sub>y</sub> 108	TBLM <sub>y</sub> 156
Filtering area(m <sup>2</sup> )	5.6	10.5	17.5	25.2	36.4	53.2	75.6	109.2
Air volume(m <sup>3</sup> /h)	675-1350	1266-2532	2100-4200	3024-6048	4333-8736	6414-12828	9115-18230	13116-26332



## FAMSUN LNGM Series High Pressure Jet Filter Dust Collector

Features: Cyclone principle adopted for dust separation and settlement, prolonged service life of filtering bags; quick bag changing device, ease of labor.  
Application: Dust collection on a dumping pit, a pneumatic conveying system and etc.  
Working air-pressure: 0.5~0.7 MPa.  
Filtering area (optional): 18m<sup>2</sup>, 27m<sup>2</sup>, 30m<sup>2</sup>, 36m<sup>2</sup>, 45m<sup>2</sup>, 54m<sup>2</sup>, 63m<sup>2</sup>, 72m<sup>2</sup>, 81m<sup>2</sup>, 90m<sup>2</sup>, 117m<sup>2</sup>, 228m<sup>2</sup>.

Model	LNGM18	LNGM30	LNGM36	LNGM45	LNGM54	LNGM63A	LNGM72A	LNGM90A	LNGM117A
Filtering area(m <sup>2</sup> )	18	30	36	45	54	63	72	90	117
Air volume(m <sup>3</sup> /h)	2160-4320	3600-7200	4320-8640	5400-10800	6480-12960	7560-15160	8640-17280	10800-21600	14040-28080



## FAMSUN TLTSY(G) Series Mobile/Stationary Dump Dust Filter with a sifter

Features: With sifting and dust collecting functions, improving material performance and working environment.  
Application: Dust collection on a manual dumping pit.  
Working air-pressure: 0.5-0.7 MPa.

Model	TLTSY(G)50	TLTSG100
Filter QTY	4	4
Filter Size	Φ120×700	Φ120×1000



# FAMSUN Conveying Equipment

## FAMSUN LSUS Series Screw Conveyor

Applicable for the horizontal or a small slope (<20°) conveying of various bulk powdery material;  
Large loading capacity, safe and reliable;  
Compact structure and flexible inlet and outlet arrangement;  
Optional of anti-blockage and speed-detecting alarms.

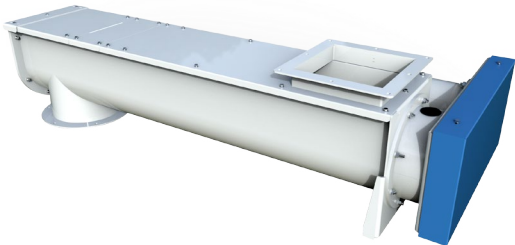
Model	LSUS16	LSUS20	LSUS25	LSUS32	LSUS40
Capacity (m <sup>3</sup> /h)	5-7	12-14	25-30	58-60	100-120



## FAMSUN LSUW Series Screw Feeder

Compact structure and high rotating speed, precisely and evenly feeding;  
Special feeding screw ensures material be transport completely, low residues;  
Optional of anti-blockage and speed-detecting alarms.

Model	LSUW16	LSUW20	LSUW25	LSUW32	LSUW40
Capacity (m <sup>3</sup> /h)	8-10	18-20	40-45	88-95	150-170



## FAMSUN LSUW Series Double-Screw Feeder

Applicable for the horizontal or a small slope (<20 °) Feeding of various bulk powdery material;  
With U-shape section, large capacity and easy cleaning;  
Equipped with two motors, suitable for motor frequency to realize precisely feeding.

Model	LSUW20×20	LSUW25×25	LSUW32×32	LSUW40×40
Capacity (m <sup>3</sup> /h)	40-42	65-90	160-180	320-330



T series bucket elevator

Model	Head pulley Diameter(mm)	Line speed(m/s)	Maximum capacity (t/h)		Maximum liftingspeed (m)
			Pellet	Meal	
T360	300	1.2 ~ 1.8	30	17	40
T400	360	1.3 ~ 1.9	45	25	50
T500	400	1.4 ~ 2.1	63	36	50
T600	500	1.6 ~ 2.3	103	58	50

Note: pellet capacity is based on bulk density of 0.75 t/m<sup>3</sup>, such as corn; meal capacity is based on bulk density of 0.45 t/m<sup>3</sup>.

1.Higher capacity

T series bucket elevator introduced new high grade bucket. The bucket is filled more efficiently and its capacity has been greatly enhanced. Compared with old bucket elevator, the T series bucket elevator is smaller in size and has more functions. This will facilitate process layout, reduce auxiliary material, cut down civil work cost and create more value for customers.

2. Lower power consumption

Optimized head sleek, lifting speed and less material returned help reduce equipment power demand. The motor model is smaller compared with older design.

Specifications:	Lift 67m³ soybean meal to 35 m high (bulk density: 0.6t/m <sup>3</sup> )	
Items compared	Model	Power
Old model	TDTG50/28	7.5kW
T series	T500	5.5kW

Optimal lifting speed will reduce material breakage and enhance finished product rate. For meal or light material, optimal lifting speed will also reduce air flow impact on material discharge. The material returned has been reduced by 80%. This not only ensures equipment capacity but also reduced power consumption and cut down customer cost.

3.Double service time of bucket

For normal bucket service time is around 1-2 years, our high grade plastic bucket service time doubles, for some process, it could keep running for as long as 5 to 10 years. The key places of bucket are thicker and more abrasion-resistant and with higher strength.



Bucket elevator model	T360	T400	T500	T600
Bucket fore-edge thickness	8.5 ~ 0.5	8.5 ~ 0.5	9 ~ 0.5	9 ~ 0.5

New high grade plastic bucket

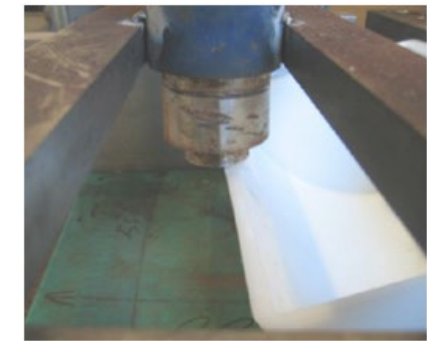
Old plastic bucket



	Impact resistance comparison	Abrasion resistance comparison
Existing plastic bucket	Structural damage after 10 times of impact, bucket unserviceable	3.9% abrasion for 30 minutes
New high grade plastic bucket	After 17 times of impacts, the bucket edge deformed with small cracks, and can be put into use after trimming.	2.3% abrasion for 30 minutes

Note:  
Impact test procedure: hit the same place of the bucket with the same weight from the same height;  
Abrasion test procedure: grind the bucket front edge with the same drum abrasion tester for 30 minutes, and calculate the weight loss ratio of the two buckets.

Impact test site



Abrasion test site



A long service life will reduce shutdowns for equipment maintenance, which not only cut maintenance cost, but also assure customers of its greatly improved equipment stability.



## FAMSUN TDTG Series Bucket Elevator



Compact structure, small footprint.  
Excellent sealing performance and venting in case of dust explosion.  
Optional devices for preventing the sideslip and back-stop to ensure safety and belt alignment.  
Widely used for the vertically conveying of powdery or granular bulk material in grain terminals, port terminals as well as such industries as feed, flour, rice, edible oil etc.

Model	TDTG 36/23	TDTG 36/28	TDTG40/23	TDTG40/28	TDTG50/23	TDTG50/28	TDTG50/32
Capacity(m³/h)	20	35	40	55	60	80	110
Model	TDTG60/28	TDTG60/33	TDTG80/33	TDTG80/46	TDTG100/46×2		
Capacity(m³/h)	120	200	300	420	800		

## FAMSUN TDTG<sub>q</sub> Series Bucket Elevator



**Sanitation-focused design enables low material residue**  
A smart self-cleaning machine base combines with coarse and micro adjustment mechanism, absolutely guaranteeing low material residue.

**High operation reliability**  
Extensive consideration to safety operation and wear-resistant measures, significantly ensure reliable operation and less downtime.

**Easy maintenance and cleaning thanks to customer-friendly structure concept**  
Vast door opening design offer easy access to inner components, delivering ease of cleaning and maintenance.

Model	TDTG <sub>q</sub> 36/23	TDTG <sub>q</sub> 36/28	TDTG <sub>q</sub> 40/28	TDTG <sub>q</sub> 50/28
Capacity(m <sup>3</sup> /h)	20	35	55	80

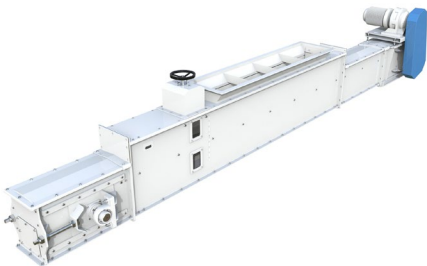
  

Model	TDTG <sub>q</sub> 50/32	TDTG <sub>q</sub> 60/28	TDTG <sub>q</sub> 60/33	TDTG <sub>q</sub> 80/33	TDTG <sub>q</sub> 80/46
Capacity(m <sup>3</sup> /h)	110	120	200	300	420

## FAMSUN TGSP Series Level Drag Conveyor

Packing seal is used at the shaft to prevent leakage;  
Patented anti-clogging structure to improve flexibility, safety and tightness;  
Flexible design at the back of the machine to eliminate residue;  
Scraper and recycling cup at the chain to reduce residue;  
Convenient to assemble and install;  
Classic type, CE certified, widely applied in conveying in feed, chemical, grain storehouse, port, malt and oilseed.

Model	TGSP16	TGSP20	TGSP25	TGSP32	TGSP35	TGSP42
Capacity (m³/h)	35	55	90	130	200	300

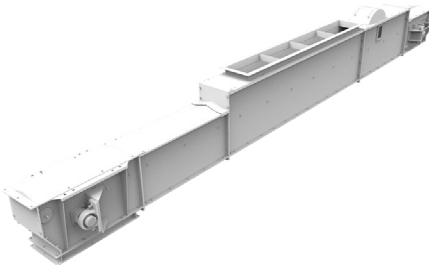


## TGSV series horizontal embedded scraper conveyor

The V horizontal scraper conveyor is composed of nose, conveying section, scraper chain, feed port, support leg and tail. The material enters from the feed port and is output from the discharge port. It is a new type self-cleaning scraper machine developed by ourselves. It effectively eliminates the residual on both sides of the bottom of the scraper, and the process suitability is basically the same as that of the TGSSp series.

Model	TGSV16	TGSV20	TGSV25	TGSV32	TGSV35
Capacity (m³/h)	40	60	100	140	200

Note: the chain speed can be adjusted slightly according to the output. If you need to adjust, please consult the engineering technology department.



## FAMSUN TFPX Series Rotary Distributor



Suitable for distributing granular and powdery materials.  
Self-locking structure, accurate and reliable positioning with guiding pipe, automatic dust cleaning in the machine, compact structure, small space occupation, ease of maintenance.  
Heavy duty construction, simple and reliable for years of operation.  
Easy installation, low maintenance.  
Spout area varied from 100x100 ~ 800x800 cm<sup>2</sup>.  
Widely used for material feeding or discharging in feed, food, flour, chemical, mineral, metallurgy, cement industries.

Model	TFPX <sub>G</sub> -200	TFPX <sub>G</sub> -250	TFPX <sub>G</sub> -300
Powdery Materials	30	40	60
Granular Materials	40	60	80
Power (kW)	0.55	0.55	0.75

Note: presents the number of out-feed pipes (4, 6, 8, 10, 12, 14).

## FAMSUN TZMQ Series Pneumatic Gate FAMSUN TZMD Series Electric Gate FAMSUN TZMS Series Manual Gate



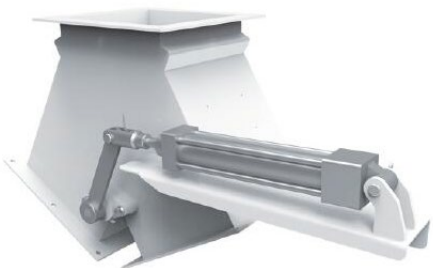
Heavy duty construction, simple and reliable for years of operation.  
Easy installation, low maintenance.  
Spout area 60x60 cm<sup>2</sup>.  
Widely used for material feeding or discharging in feed, food, flour, chemical, mineral, metallurgy, cement industries.

## FAMSUN TBDQ<sub>y</sub> Series Pneumatic 2-way Round Type Diverter FAMSUN TBDQ<sub>y</sub> Series Electric 2-way Round Type Diverter

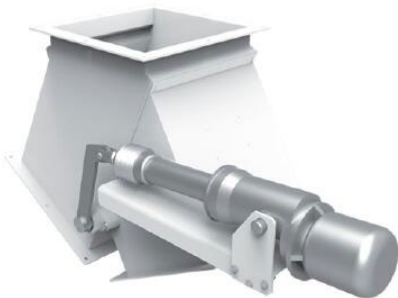


Compact structure, easy installation and operation.  
Good seal without leakage.  
Spout area varied from 200x200 ~ 500x500 cm<sup>2</sup>.  
Widely used for direction control of material flow in feed, food, flour, chemical, mineral, metallurgy, cement industries.

## FAMSUN TBDQ Series Pneumatic SquareType Diverter FAMSUN TBDD Series Electric SquareType Diverter



Simple and compact structure, easy installation.  
Safe and reliable running, low maintenance.  
30° and 45° spouts are available.  
Spout area varied from 100x100 ~ 500x500 cm<sup>2</sup>.



# FAMSUN Cleaning Equipment

## FAMSUN TCQY Series Drum Type Pre-Cleaner



Simple structure, ease of cleaning and maintenance.  
Aspiration system for assistant cleaning.  
Suitable for large impurity removal in a material receiving system in feed mills, grain storage facilities and etc.

Model	TCQY63	TCQY80	TCQY100	TCQY125
Power (kW)	0.55	0.55	1.5	1.5
Capacity (t/h)	20	40	60	80

## FAMSUN TCQYS Series Double-Deck Drum Type Pre-Cleaner



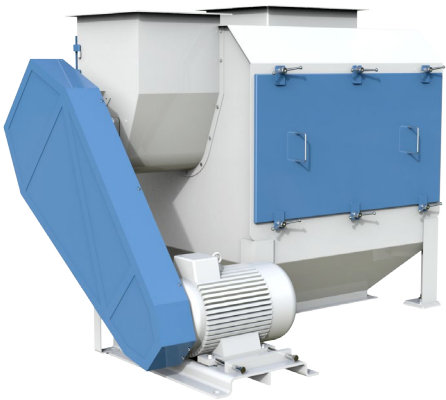
Structured with double decks and an aspiration system, capable of separating large, small and/or light impurities.  
Aspiration system for assistant cleaning.  
Mainly used for granular material cleaning in industries such as grain storage, food, chemical, mining and so on.

Model	TCQYS85A	TCQYS100A	TCQYS100A-I	TCQYS100A-II	TCQYS125A	TCQYS125A-I	TCQYS150
Power (kW)	2.2	2.2	3	4	4	4	7.5
Capacity (t/h)	30-60	40-85	60-110	80-150	80-150	100-170	120-200

## FAMSUN SCQZ Series Conical Drum Type Pre-Cleaner

Simple structure, ease of cleaning and maintenance.  
Aspiration system for assistant cleaning.  
Specialized for powdery material cleaning in compound feed mills.

Model	SCQZ60×50×80A	SCQZ90×80×110A
Power (kW)	5.5	11
Capacity (t/h)	10-15	25-30



## FAMSUN SCQZ Series Finished Product Screener

Effective screener for removing oversized particles and fines from finished products in a compound feed mill.

Model	SCQZ51×46X90	SCQZ55×46X150
Power (kW)	7.5	18.5
Capacity (t/h)	40-60	80-100



## FAMSUN TCXT Series Permanent Magnet Sleeve

Powerful iron removal performance without power consumption.  
Magnetic field intensity≥3000GS; iron removal efficiency ≥99%.  
Widely employed in the material receiving system of feed mills, grain storage facilities and etc.

Model	TCXT20	TCXT25	TCXT30	TCXT40B
Capacity (t/h)	20-30	35-50	45-70	80-100





# Feed Mill Project

One-source flawless project delivery

FAMSUN is an integrated solution provider in the horizontal business as well as in the vertical ones. It is a competent EPC (Engineering, Procurement and Construction) contractor from consultation to designing, civil construction, manufacturing, logistics, installation, commissioning, training and service.

We learn from our previous projects to make continuous improvement. We applied the FPD (Flawless Project Delivery) throughout our projects to make sure projects are delivered to our clients with highest efficiency and quality possible.

So far, FAMSUN has completed more than 4,200 feed mills all over the world, consisting of:

- Animal feed mill, 3-40 t/h per line;
- Aquafeed mill, 1-18 t/h per line;
- Pet food mill, 1-15 t/h per line;
- Premix mill, 0.5-15 t/h per line.



Consultation

Design

Civil Construction

Manufacture

Logistic

Installation

Training

Service





# Animal Feed Mill Project

We offer a broad range of effective animal feed manufacturing solutions



Poultry and livestock contributions are vital for the global food security, while animal feed production is an important sector in the global food industry. Feed manufacturers use natural resources to guarantee safe, rich and affordable animal proteins.

As a professional and experienced technical solution supplier, FAMSUN offers a wide range of products and solutions for the feed industry. In order to produce quality products and achieve sustainable operation, we take into account the processing reliability, energy efficiency, optimum capacity, hygiene, product traceability, handy operation and low maintenance in our designing standards, specific feed equipment and plant processing solutions.





# Aqua feed Mill Project

We cherish aquaculture sustainability

The increase of world population, aquaculture activity and consumption of fish are a result of consumer’s rising health awareness and has continued to stimulate the demand for aquafeed. However, aquafeed manufacturers must take into consideration the limited resources of key ingredients such as fish meal and fish oil, feed safety, water pollution and other sustainability and environmental issues.

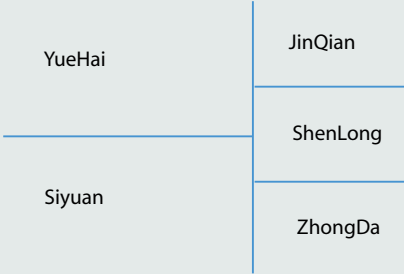
FAMSUN has rich experience in delivering aquafeed processing lines and plant construction solutions in the traditional aquaculture markets in China and Asia as well as in other emerging markets. FAMSUN helps its customers to increase aqua feed production efficiency, flexibility and sustainability, with its investments in the research and development of aquafeed pelleting and extrusion equipment, as well as in processing technology, pre- and post-treatment process, the application of raw materials and the digestibility of feed products.



● JiaHe



● YueHai





# Premix Plant Project

We focus on high value and safe nutritional solutions

The industrialization of meat production, growing global demand for protein-rich products, the increase in meat consumption, meat quality, safety awareness, and the frequent outbreaks of diseases have driven the demand of feed premixes and additives, especially in the emerging markets like China and Brazil. Rising cost of raw materials and regulation factors are the main restrains but also potential opportunities for feed manufacturers.

FAMSUN is familiar with the rules, requirements and standards of premix production and applications, and applies its knowledge into the designing, manufacturing and installation of premix processing solutions, to enable to process high value raw materials and produce precise and contamination-free quality premix products to our customers.



● XinNong



● GuangAn



# Dry Pet Food Plant Project

We help pets to live longer and healthier lives through a well-balanced nutrition diet

Pet food contains plant and/or animal materials, intended for consumption by pets and formulated according to their strict nutritional needs, which generally consists of cereal grains, meat, milk products, vitamins, vegetable oils and minerals. Qualified pet food is usually characterized by its balanced nutrition, high digestibility, excellent palatability and improved immune system.



The flavor, color, shape and even aesthetic quality of package can influence pet owner's consumption decision. To be competitive in the high-end market, pet food manufacturers must make distinguished products.

As a professional technical supplier, FAMSUN works with pet food manufacturers to develop high-value, nutritional and attractive pet food products. FAMSUN's extrusion system, post treatment processes, state-of-the-art processing techniques and customized solutions enable customers to produce high-end competitive products.







# Steel Silo

We support customers in the grain value chain

We offer complete logistics solutions in grain handling, cleaning, drying and storage. From grain collection points to grain elevators, from inland and water terminals to processing plants such as feed mills, rice mills, flour mills, breweries and oilseed processing factories, FAMSUN has constructed over 1200 steel silo projects around the globe.

The key products and systems include:  
 Assembly type steel silos: 1-18,000 t/silo; Spiral steel round silos: 1-8,000 t/silo;  
 Material handling systems: bucket elevators, conveyors, sweepers and spreaders;  
 Conditioning and drying system: cleaners, dust collectors, dumping systems, dryers, fans and controls.





# Steel Structure

For better, safer and more economical construction

Steel is cost effective, structurally sound and manufactured to strict specifications and tolerances. It is easy to modify, install and offers design flexibility. It allows for improved quality of construction and less maintenance, while offering improved safety and resistance.

From designing to construction following AISC standard, FAMSUN has proved itself as a reliable steel structure construction partner by delivering factory buildings, warehouses, high buildings, airports, gymnasiums, conference halls and bridges.

FAMSUN's Quality Management System (QMS) ensures that we deliver a consistent high quality;

ISO certified: 9001 2008 for designing, manufacturing, fabrication and installation of steel structure and turnkey projects.

Certified structural steel fabricator, integrated engineering and design company.

Efforts are especially focused on delivering steel structure buildings, warehouses and other steel structure products such as rising tower and catwalks for feed mills, rice mills, grain storage terminals and other facilities in agro-industry.



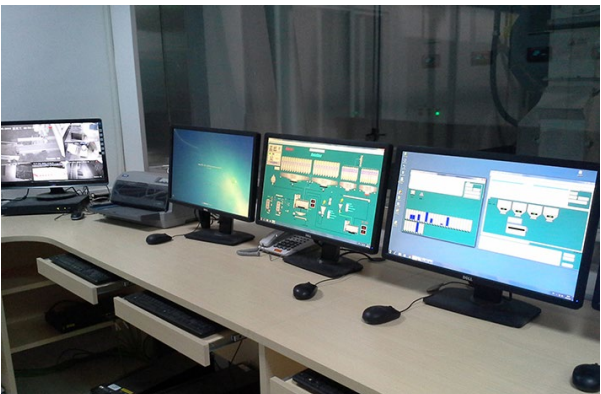
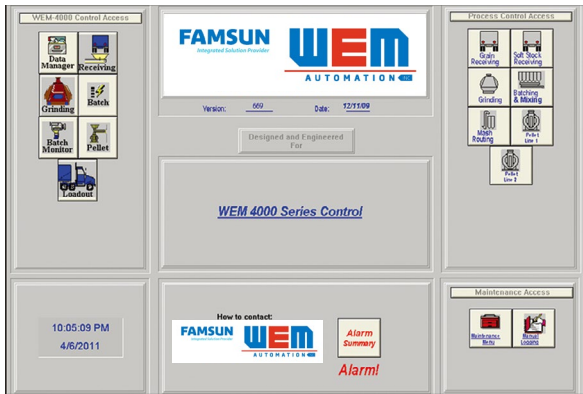


# Automation System

We aim to be forerunner and a pioneer in agro-industrial automation

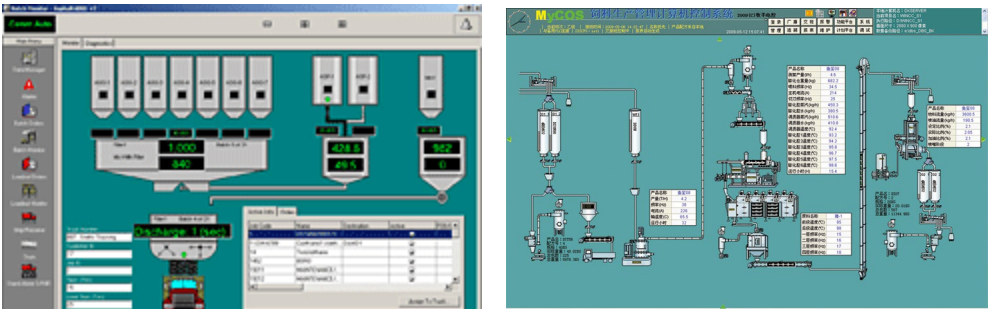
We integrate solid expertise with hardware and software technologies to increase productivity, efficiency and flexibility.

With our capability and experience in plant automation engineering, process control in feed, rice milling and grain logistics, we help our customers lower cost and increase efficiency. In order to provide comprehensive solutions and services to meet different automation needs, FAMSUN created a Joint Venture with WEM Automation LLC in 2011.



- FAMSUN-WEM Automation products and solutions include:
- Systematic solutions: PC based MYS Control System, MYCOS Control System and FAMSUN-WEM 4000 Control System for full plant automation; Mimic screens, instrument controlled batching system, PC based batching system for production process control;
  - Hardware solutions: stand-alone control boxes for single machine production operation; Mimic control screens and cabinets, PLC hardware, IT hardware, weighing scales and sensors.
  - Quantitative bagging machines: Screw, belt or gravitation bagging for packing powdery and granular products into bags ranging from 5 up to 100 kg.

- FAMSUN-WEM 4000 System:
- It applies PC/PLC system in the operator interface, data management, plant monitoring and all real time process control;
  - It is supported by SQL Server Database and capable of interfacing with all formulation software and corporate ERP or MIS system;
  - It uses separate control modules for different purposes and economical system expansion;
  - Traceability module delivers plant wide production tracking and lot code tracing;
  - It uses wireless PDA and remote control.



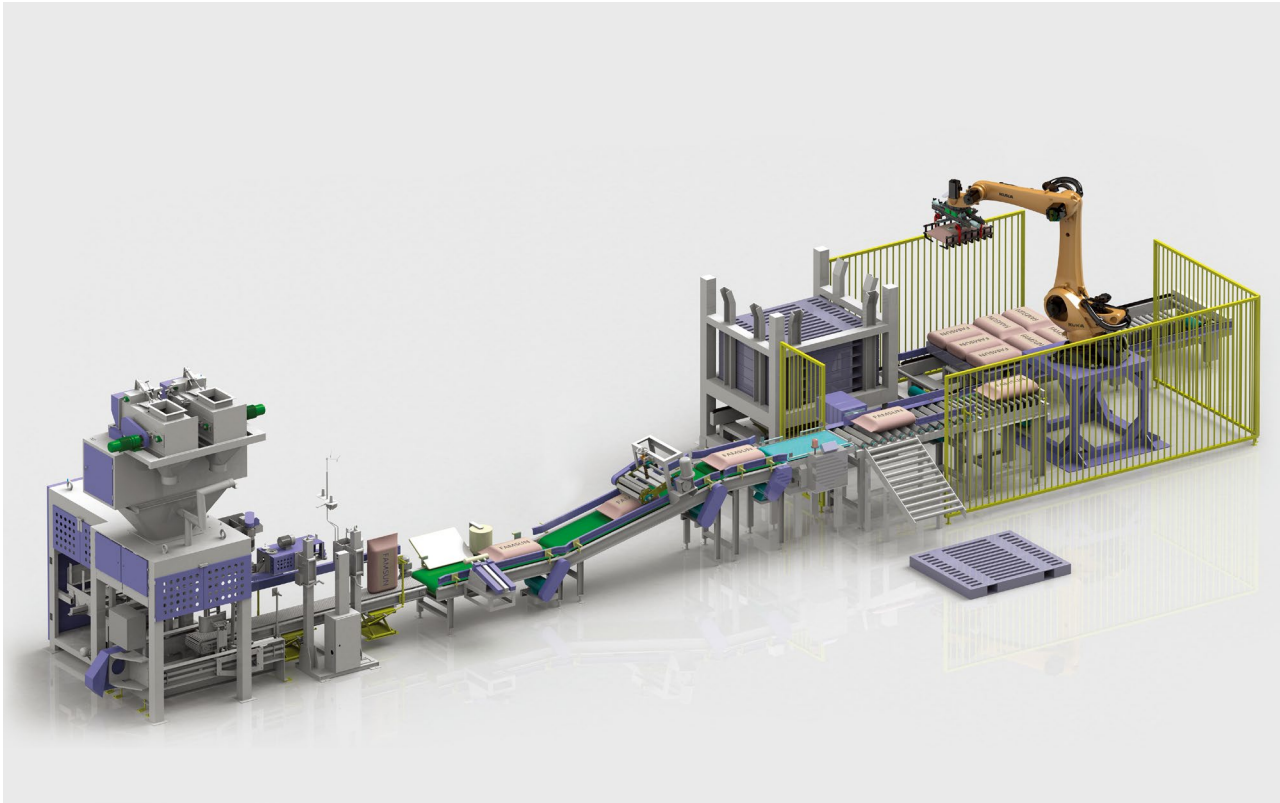


# Robotic Machinery

We offer more choices for improving operations

FAMSUN Robotic Machinery combines the latest technology with research, innovation, and development of a balanced product portfolio to increase efficiency. The value-added products and systems have already helped many customers in their respective markets such as feed manufacturing, grain milling and handling, food processing, pharmacy and port facilities.

- The main systems and products include:
- Robotic pelletizers and stacking lines;
  - Automatic packing machines and packing lines;
  - Bulk loading and transportation systems

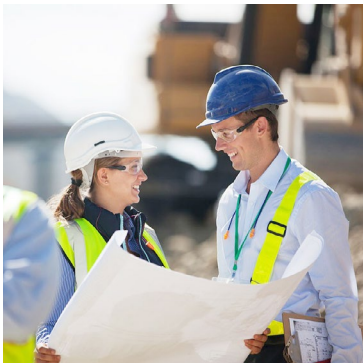




# Customer Service

Our Goal is to provide excellent customer service

By raising the efficiency and value of our customer's equipment and operations and providing first-class service, we have expanded our service capabilities and support around the world. Our service engineers receive continuously updates in training, tools and support programs and keep their knowledge and skills on the latest standards. Our quick response service network covers not only local offices, spare part warehouses, field service and online support, but also remote services for immediate and efficient troubleshooting.



- Customer service capabilities and offerings include:
- Spare parts. To secure plant availability.
  - Repair. For high reliability and minimizing downtime.
  - Maintenance. To solve problems before they occur and remain peak performance of equipment.
  - Retrofit & Reconditioning. To create new life into old parts.
  - Training & Courses. To deliver a positive experience.
  - Optimization. For noticeably higher productivity and help remain fit to meet the challenges.
  - Other supports such as consulting, installation, commissioning, etc. all help to ensure higher plant efficiency.

**FAMSUN co., Ltd.**

Add.: No.1 Huasheng Road, Yangzhou, Jiangsu, China 225127

Tel.: +86-514-87848880



2018.8